

# flipIT Lift Desk®

**SMARTdesks®**

www.smartdesks.com  
800 770 7042



Verify the weight of your monitor

Models ending in THB are for monitors weighing 15-24 lbs.

Models ending in TLB for monitors weighing 5-15 lbs.

**DFL-722630-T23-THB or DFL-722630-T23-TLB**  
Double flipIT Lift Desk

Includes two flipIT Lift monitor supports (push open/close, holds one monitor per user, each monitor 5-15 or 15-24 lbs and up to 23" wide, monitor can tilt), two 26" x 8" keyboard/mouse trays with integrated mouse fence and wire management pass through, two CPU bays (to right of users), 80mm side access grommets; top surface finished with high-pressure laminate, base finished in melamine, PVC edge trim (semi-rigid); design includes contoured, arched panels and radius corners; includes 1.25" steel floor leveling glides with .75" adjustment; 72"W x 26" D x 30" H.

## How to assemble SMARTdesks® flipIT Lift Desks® — Singles and Doubles.

This manual shows the approach for assembling all models by focusing on the single with CPU bay and KB26 dual arm keyboard tray.

### Tools Required:

- Phillips #2 and #3 drive
- Torx T20 driver
- 3/8" open end wrench

**SFL-402630-T23-THB or SFL-402630-T23-TLB**  
Single flipIT Lift Desk

Includes flipIT Lift monitor support (push open/close, holds one monitor 5-15 or 15-24 lbs and up to 23" wide, monitor can tilt), one 26" x 8" keyboard/mouse tray with integrated mouse fence and wire management pass through, one CPU bay to right of user, 80mm side access grommets; top surface finished with high-pressure laminate, base finished in melamine, PVC edge trim (semi-rigid); design includes contoured, arched panels and radius corners; includes 1.25" steel floor leveling glides with .75" adjustment; 40" W x 26" D x 30" H.



# Parts Identification

The top includes male RV clips which are used to attach the top to the vertical sides and CPU bay panels. Keyboard tray pilots are pre-drilled.



Monitor mount lid, with bracket and wood screws.



VESA monitor mount and tilter, installs to monitor lift with Torx T20 screws and 3/8" open end nuts.

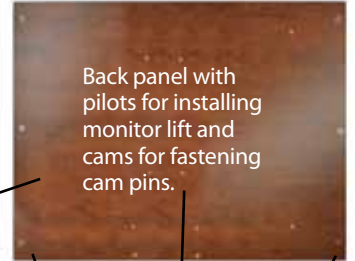
RV clips mounted in top and to side panels.



Side panel with RV clips, gliders, holes drilled for cam pins and 80mm grommet.



Back panel with pilots for installing monitor lift and cams for fastening cam pins.



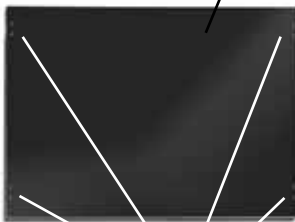
Cam pins



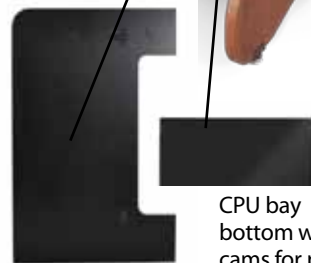
The keyboard kit includes L brackets and self-tapping metal screws, plus eight #8 #10 thread 5/8" pan head Phillips #2 wood screws



Monitor safety panel installs with Keku clips. Pilot holes are pre drilled and wood screws supplied.



Male and female Keku clips with wood screws.

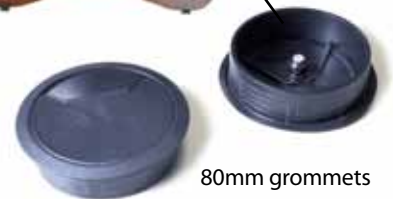


CPU bay bottom with cams for pins installed

CPU bay panel with pilots for Keku clips and cams for pins.



Side panel with RV clips, gliders, holes drilled for cam pins and 80mm grommet.



80mm grommets

Motorless monitor lift mechanism.



There are variations of parts and counts based on single and double desk designs, and number and configuration of (or exclusion of) CPU bays.

## Getting started

Prepare a place for assembly on a carpeted floor and at workbench height with a furniture blanket to protect the furniture surfaces.

Identify the parts and get a sense for how they fit together from the preceding page. On the back page of the manual, each model is illustrated to help you see where CPU bays are located (if they are included).



## Prepare lift mechanism for mounting

The lift mechanism ships with a safety screw and clip. Remove the screw with a wrench.



Note: In these close-up details, the mechanism was photographed when it was already installed to the desk back panel. Below, the mechanism is shown as it is shipped for assembly.



Place the mechanism on the floor, carefully push down and compress the unit until it releases, then give resistance to let the monitor lift fully extend.

## Install the monitor lift mech

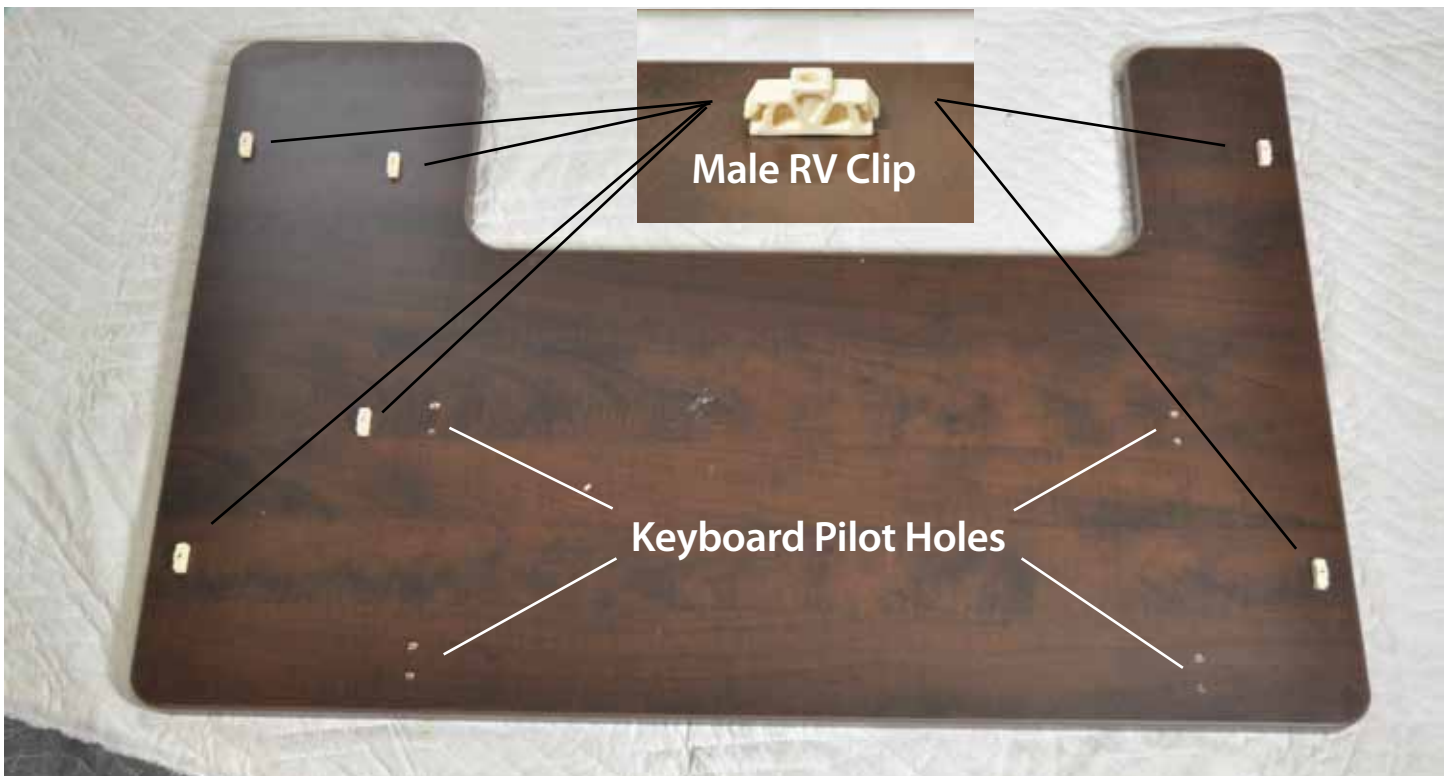
Secure the fully extended mechanism to the back base panel using the pilot holes provided and #10, 5/8" pan head #3 Phillips screws with a power screw gun.



This pre-assembly can be done any time prior to desk assembly. It is shown first to prevent mishap in handling the lift mech.



## Place desktop on carpeted or blanketed floor.

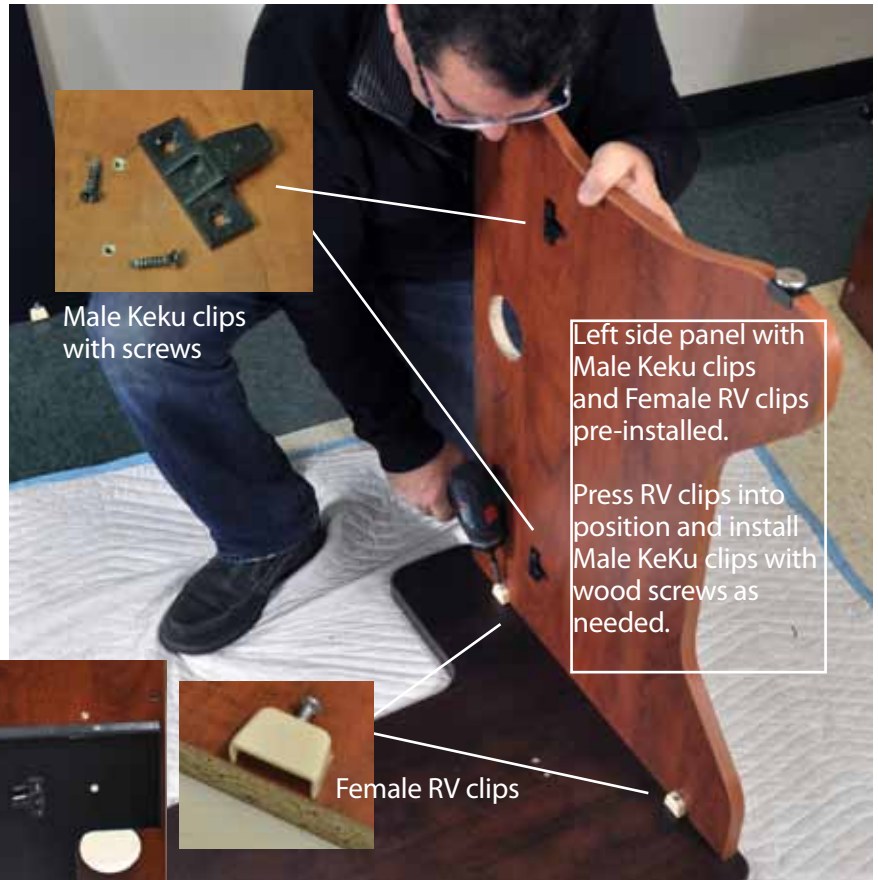


If male RV clips are not pre-installed, press them into position as shown.

## Pre-install Keku clips and RV clips to left side panel

## Install left side panel to desktop

Use #2 Phillips drive to tighten RV clips



## Pre-install Keku clips and RV clips to CPU Bay panel

Note orientation of the Keku clips, installed with wood screws.  
The illustration shows both sides of the CPU Bay panel.

## Install CPU Bay panel to desktop

Use #2 Phillips drive to tighten RV clips



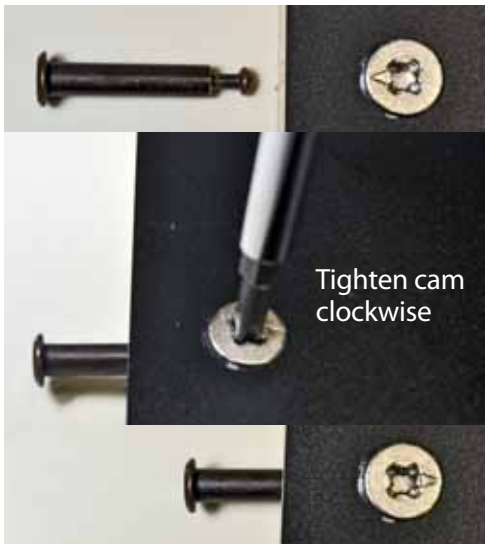
## Install Right Side panel to desktop

Use #2 Phillips drive to tighten RV clips

## Use cam pins to assemble back and CPU bay

Insert pins into cabinet holes half way, move panel into position and push the pins home.

Align the arrows on the cams to point to the hole for pin insertion. Use a Phillips screwdriver to tighten cam clockwise a half turn.



Cam and pin locations are 3 from side panels to back, and two through back to CPU Bays. CPU Bay bottoms assemble as shown.



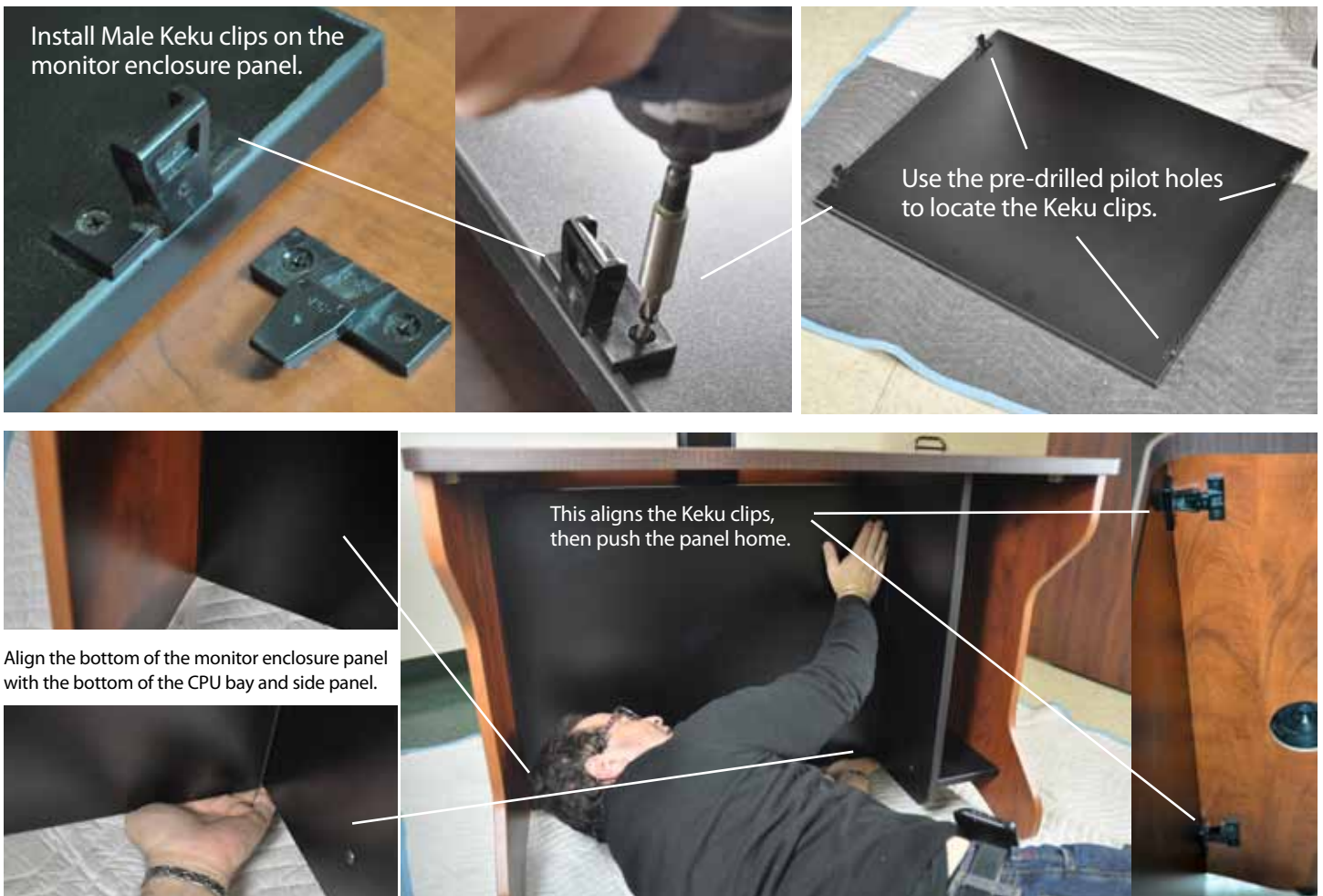
## Attach L brackets to keyboard tray and install to desktop

Use self-tapping metal screws to attach L brackets using the 4th hole, or as desired.



Use 8 kitted wood screws to install keyboard tray into pre-drilled pilot holes.

## Install the monitor enclosure panel



Install Male Keku clips on the monitor enclosure panel.

Use the pre-drilled pilot holes to locate the Keku clips.

This aligns the Keku clips, then push the panel home.

Align the bottom of the monitor enclosure panel with the bottom of the CPU bay and side panel.

## Install lid to monitor lift

Use supplied wood screws to install lid bracket to lid.

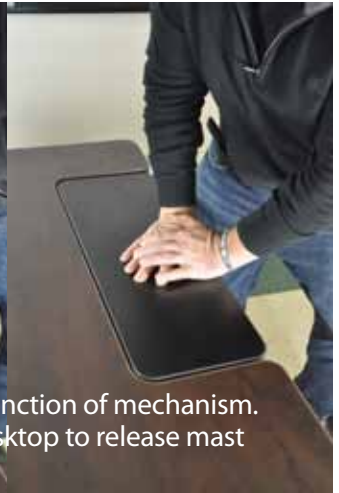


Install lid assembly to the top of the monitor lift mast.

Use Torx T20 driver to install lid bracket to top of mast.



Torx T20



Push down lid to test function of mechanism. Push down past the desktop to release mast to full height.

## Install tilter mount to flipIT lift mast

Use 8/32 Phillips #2 3/8" machine screws and 3/8" hex nut to install the tilter mechanism to the mast at the desired working height of the monitor.



## Install VESA bracket to monitor

Use the 4M screws supplied with your monitor to attach the VESA bracket. Gravity holds the monitor assembly together. Use the red lever to release the monitor to dismount.





## Test the operation of the flipIT Lift

The flipIT Lift is available for two ranges of monitor weight.

If you have a heavy monitor on a light lift, the lift may not bring the monitor to full height without assistance. If you have a light monitor on a heavy lift, the unit may be hard to close and raise the monitor faster than desired.

Models ending in THB are for monitors 15 to 25 lbs. "H" means Heavy.

Models ending in TLB are for Lighter monitors between 5 and 15 lbs.



## Monitor must be in vertical position for closing

Monitor tilt is not automatic. You must manually set the monitor position to vertical for opening and closing.



## Monitor in stowed position

The monitor can be positioned on any desired vertical height without fear of hitting the floor when stowed.

The generous wire way from CPU bay to the storage chamber accommodates cable freedom of movement.

Please make sure that cables have freedom of movement. Remove the front monitor panel for full access.



# flipIT Lift Desk®

Does your model have  
CPU Bays?

And where do they go?

This assembly instruction booklet does not illustrate each model, but does show approach for assembly. Use this page as a guide for how your finished desk should look.



**SFL-362630-X23**



**SFL-362630-T23**



**DFL-722630-C23**



**DFL-722630-T23**



**DFL-662630-X23**



## One last thing:

(You can do this any time.)

Insert the wire grommets into the 80mm holes on the desk end panels.



[www.smartdesks.com](http://www.smartdesks.com)  
800 770 7042