

Quark2 | Qstar ASSEMBLY

Quark2 and Qstar have the same type of ratchet column, so they assemble and operate the same way.

Estimated assembly time:
20 minutes per unit, or less.



SMARTdesks®

800 770 7042
www.smartdesks.com

Tools Required

Power Driver | #2 Phillips Driver

Hex Key



1/2" Open-End Wrench

Hardware



4 Hex-key drive bolts



6 Phillips Head Wood Screws



8 1/4x20 hex head Phillips drive bolts



4 Hex-key trumpet head bolts

Parts Inventory



Quark Top



Qstar Top



Ratchet column



Quark base



Qstar base



WireWonder wire manager



5 locking casters per base



Leg to top mount

Prepare an assembly area

Work on a padded surface, protected by a furniture blanket or clean cardboard. This protects the laminate surfaces from being scratched.

Keep track of any screws or metal filings that could invade the assembly area and cause damage.

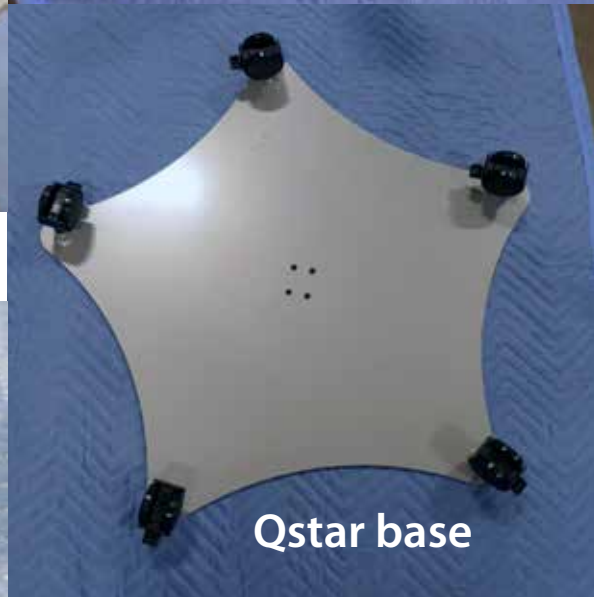


Quark base

Install 5 Locking Casters into Base Plate

Quark and Qstar are designed to be installed in exactly the same way. Simply screw the threaded posts into the fixtures. Tighten with 1/2" open-end wrench.

These can be set aside on their wheels, ready for assembly.



Qstar base



Mount top plate to ratchet column leg

Start the 4 trumpet head hex drive bolts in the countersunk locations.

Use the hex key to complete the installation.

With ratchet column standing in operating position, place the top mounting plate over the 4 bolt positions.



Mount base to ratchet column leg

Turn the assembly you just made upside down.

Position the base of the Quark or Qstar5 on the column so it aligns with the mounting holes.

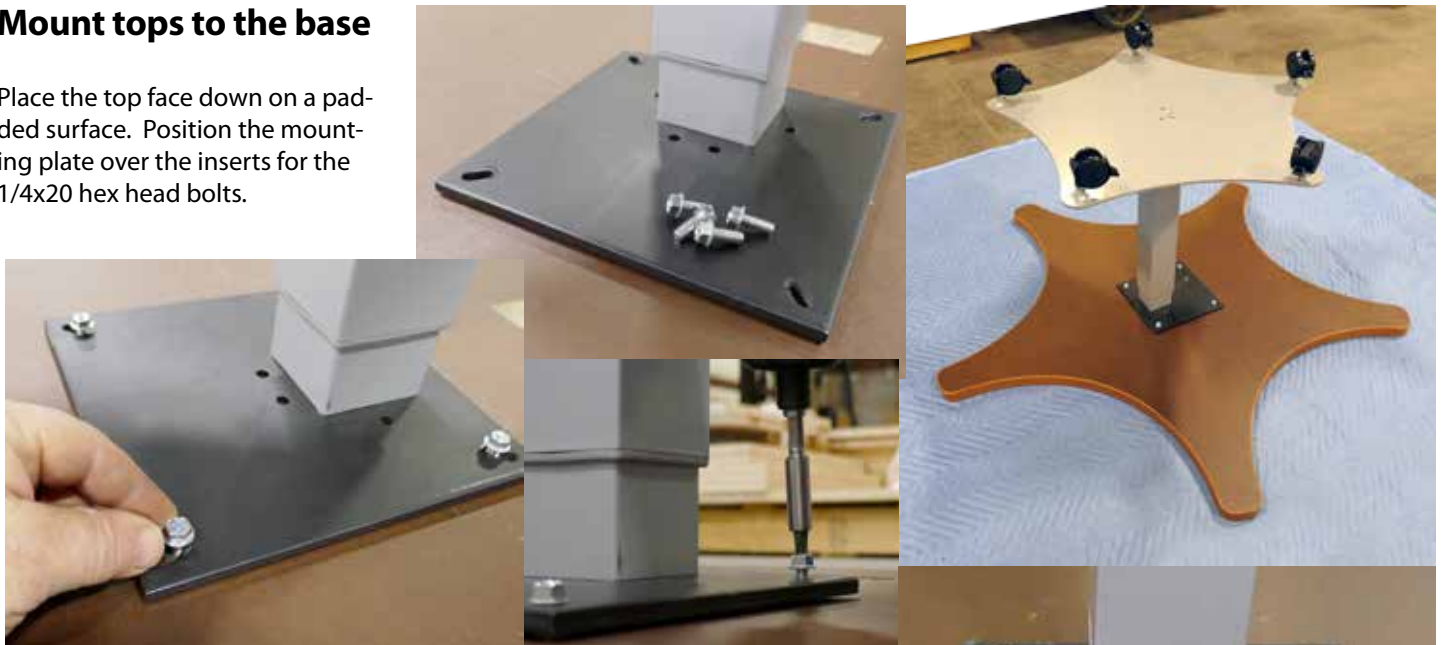
Start the 4 hexhead bolts by hand.

Complete the installation with the hex key.



Mount tops to the base

Place the top face down on a padded surface. Position the mounting plate over the inserts for the 1/4x20 hex head bolts.

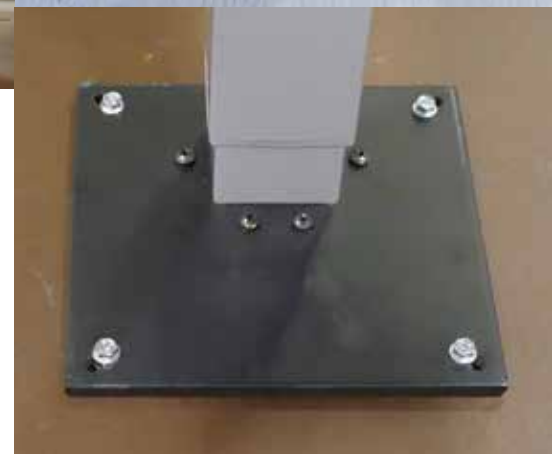


Start the 1/4x20s into the inserts, then tighten with #2 Phillips or hex socket, but do not over-torque. Over-tightening will cause the inserts to fail.



Install 4 Phillips Head wood screws to complete the top plate mounting.

1/8" pilot holes for the wood screws should be provided.



Mount WireWonder™

WireWonder is placed with the “mushroom tops” facing the leg.



Make an 1/8" pilot hole and install WireWonder with 4 Phillips head #2 drive wood screws.

Installation complete

The ratchet leg height adjustment works in 1 inch increments. Raise to the desired height by lifting the top. When raised beyond its highest stop, the ratchet resets so it can be lowered to its extreme low position.



Always maintain control of the load

Never raise to the reset position and drop it. Instead, when lifted to the reset release position, carry the weight of the top until it comes to rest at its lowest position.



Qstar Center Table



Height matching by the numbers

The height increments are marked on the leg column for ease of adjustment.

The Quark2 system can dock at any height desired.

Qstar⁵ Conference configuration

