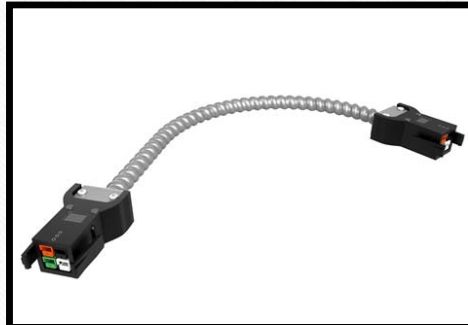
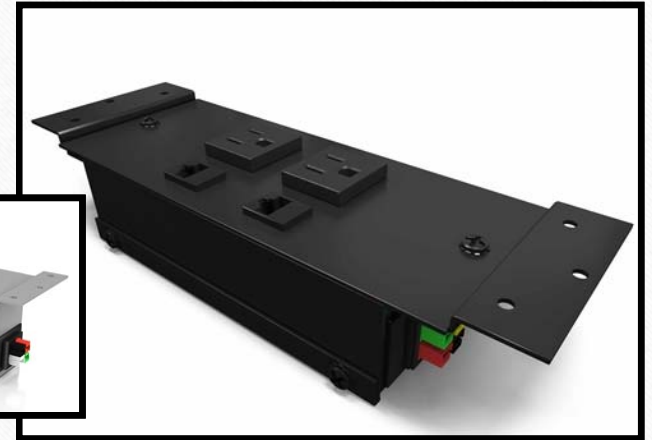
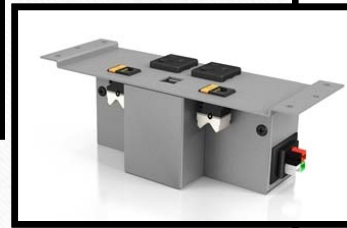


Male/Female
Interconnecting cable:
PD-FM-length
*Connects to Villa and out
the side of a table.



Female/Female
Interconnecting cable:
PD-FF-length
*Connects to Villa and out
the side of a table.



Villa connections on both ends – require a cable that
has a FEMALE connection on both sides. The
VILLA has Male connections only.



Kit includes: Villa, trim kits & Cables.



VILLA KITS



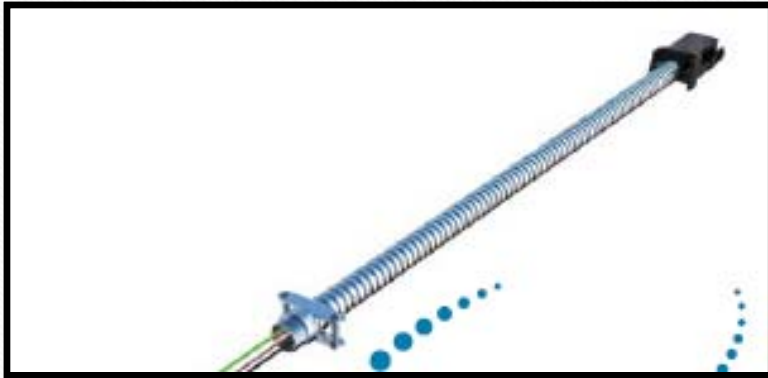
PD-42-AP1-length of cord
This unit includes a standard
Molded plug.
Single circuit 1 only.



Assure all the Villa kits are
Circuit 1 only.



SINGLE CIRCUIT POWER IN FEED

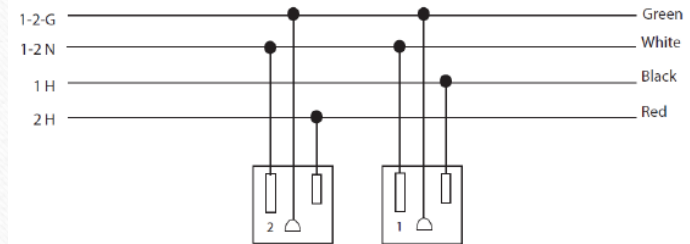


Hardwired starter is hardwired to the wall and cannot be moved. PD-42-SB2-Length 2 circuit hardwired starter cord. Electrician required to hardwire into the wall. This cord will hang out of the wall permanently.



Connect starter to Male end of the Villa Kits.

Electri-Pak 4 Wire, 2 Circuit
Wiring Schematic



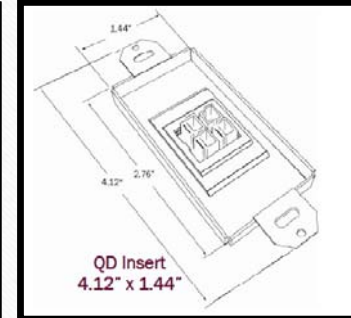
HARDWIRED STARTER-2 CIRCUIT



Above images shows: wall box: PD-42-QD-INSERT – inserted by electrician into a double outlet box (provided by the electrician).



PD-42-QD-Insert



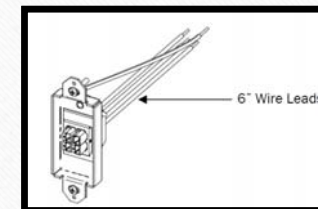
Fits standard Decora® Opening.



Insert -Shown into floor box (provided by electrician).



Insert –Shown inserted into a wall (trim plate by electrician).



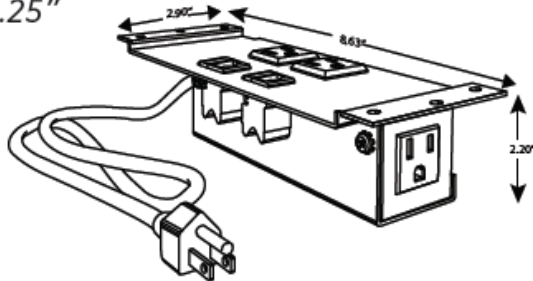
Electrical cords



***QUOTE with FF connection cable: PD-42-FF-length.

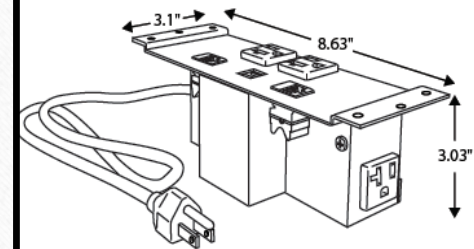
Wall Start Insert & Cable. (2 products).

VILLA POWER BASE WITH DATA SHOWN
3.20" x 8.63" x 2.25"



Power/Data

VILLA POWER BASE WITH USB AND DATA SHOWN
3.10" X 8.63" X 3.03"



Power/Data/USB

VILLA with plug.