

# Assembly Instructions for

# The Brig™ and

# Li'l Brig™

For full sized towers

For small form factor CPUs



The Brig™ and Li'l Brig™ go together identically. Parts described and demonstrated are Li'l Brig™ product, the difference for The Brig™ being larger top and bottom pans as shown. The Brig™ uses a 5th bar instead of the security tab used by the Li'l Brig.

## Parts Identification

©2010 CBT Supply, Inc. All rights reserved



## 1. Install Bars in Bottom Pan

Place CPU on bottom pan and determine locations for bar installation. Choose the closest clearance between bars and CPU case. Use 4 of the 8 black machine screws provided.

The Brig uses 5 bars and does not use a security tab.



## 2. Install Security Tabs (Li'l Brig only)

Use self-tapping metal screws to install security tabs into holes provided in the top and bottom pans at the back edge. This operation requires slow, steady force. Once installed, screws are difficult to remove. Several sets of holes are provided so you can avoid cable routing conflicts. When the top is installed, the CPU is trapped inside.



## 3. Install Bars in Top Pan

With bars and security flanges installed, place CPU on bottom pan. Front of CPU should be oriented with curved flanges as shown. If CPU is taller than the bars, screw in bar extensions. Use 4 remaining black machine screws to install top pan onto bars.

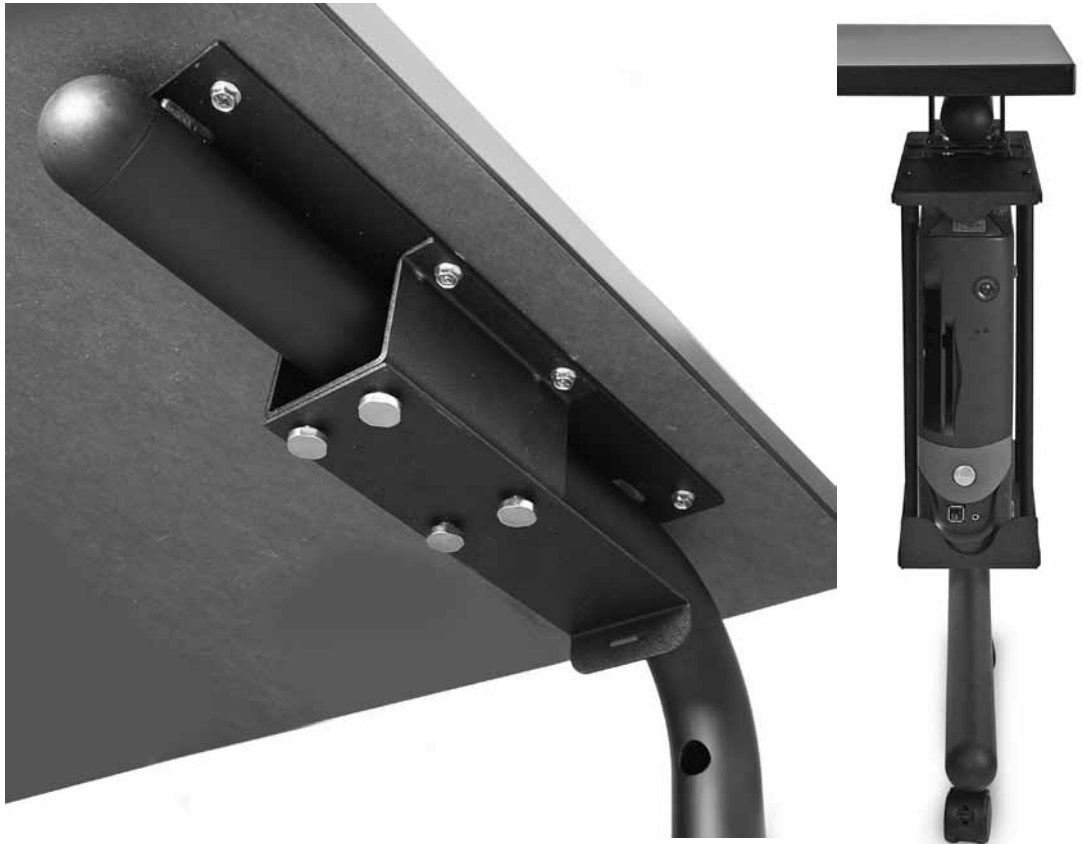


#### 4. Install Mounting Bracket to Table

The Brig™ mounting bracket is designed to integrate with the C-Leg used in HorizonLine™ and Pi™ table systems. It may also be installed to the under surface of any table with sufficient clear space for the CPU.

Use the bolts provided with HorizonLine™ or Pi™ table legs to mount the bracket using the common plate holes.

If mounting to table surface without C-leg system, provide your own screws or bolts appropriate for table thickness.



#### 5. Slide The Brig™ Onto Mounting Bracket

Slots on the top pan slide over studs on the mounting bracket. Slide the locking hole tab through the slot in the mounting bracket.

Use the wire clip to interlock the bracket with the Brig™. The wire clip, provided for this purpose, is easily removed. You may wish to use a cable tie or your own combination lock for added security.



**The Brig™**  
and  
**Li'l Brig™**



**CBT Supply, Inc.**

**800 770 7042**

Products for the Net Generation<sup>sm</sup>