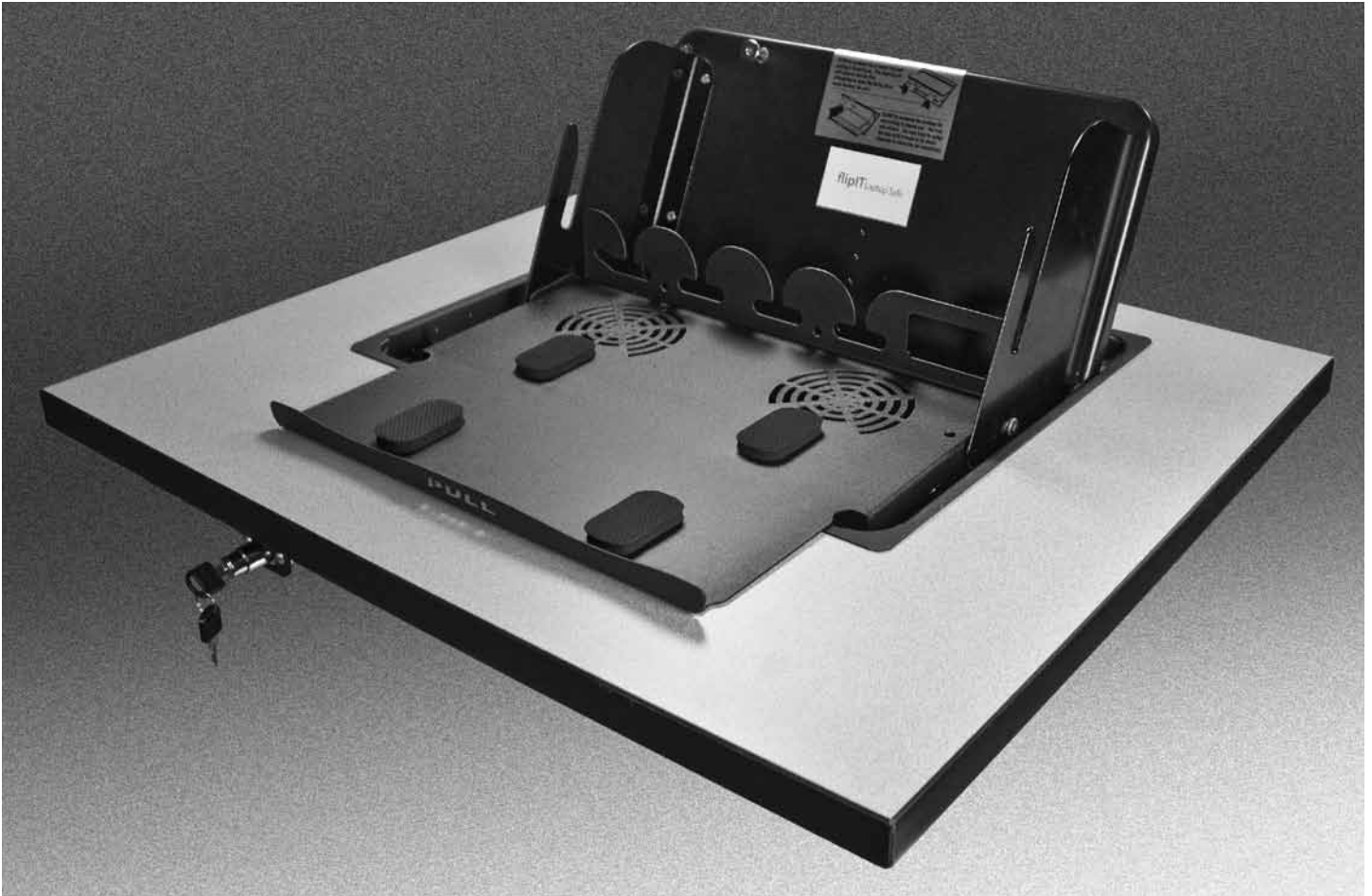


flipIT® Laptop Safe



How to install into any desktop using paper template for cutting table top. (Paper template is supplied in flipIT® Kit for either FIL-18 or FIL-23).

How to install into factory-cut top: start at Step 5, page 7.

Installation is illustrated using the FIL-18. The widescreen version, FIL-23, installs exactly the same way. The only difference is that the width is greater.

Getting Started

These installation instructions guide you through the proper way of completing the assembly of the flipIT® Laptop Safe Kit FIL-18 and FIL-23 with touch latch and dead bolt lock. Improper installation may void the warranty. It is especially important that the installer observe proper care in protecting surfaces from abrasion.

For any questions or assistance, please contact Technical Services at 800-770-7042.

WARNING

POWER TOOLS ARE DANGEROUS

Review the safety procedures supplied by your power tools' manufacturers. **Heed all warnings for your safety's sake. Always use safety glasses and wear proper apparel** that won't get caught in moving parts. CBT Supply, Inc. will not be held liable for misuse of tools and disregard for power tool manufacturer's safety precautions.

Tools needed for full installation

Tools needed for pre-assembly:

- Power Drill
- Tape Measure
- Commercial Grade Jigsaw
- Phillips#2 Bit Screwdriver
- 3/8" Drill Bit
- 1/8" Drill Bit
- 3/16" Hex Key
- 3/8" Open-end Wrench
- Slot Screwdriver
- Pencil
- Permanent Marker
- Masking Tape
- Glue Stick

Tools needed for installation into a factory-cut desktop only:

- Power Drill/Screw Gun
- Phillips#2 Bit Screwdriver
- 1/8" Drill Bit
- 3/16" Hex Key
- 3/8" Open-end Wrench
- Slot Screwdriver

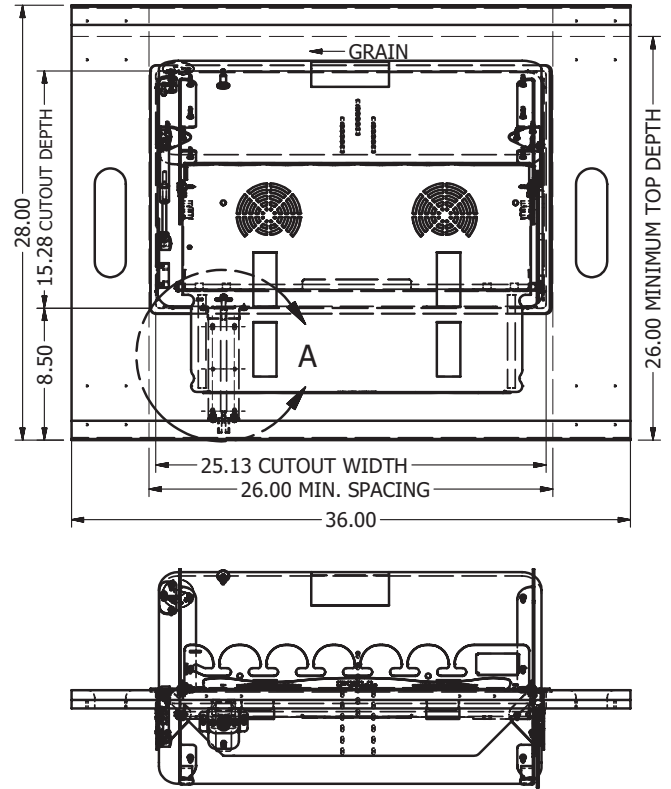
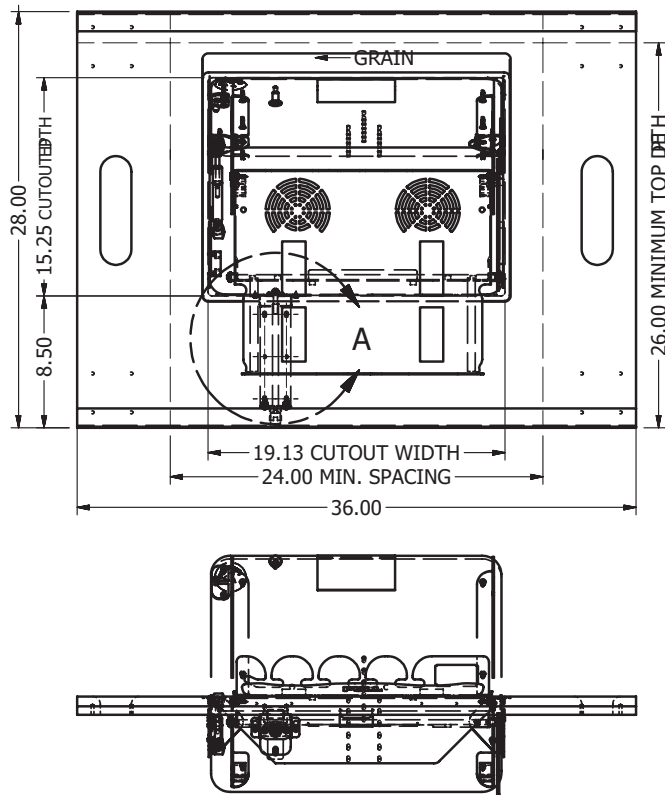


STOP!

The installer must possess the skill to cut within the tolerance of the template layout line if no factory-made cutout is made in the table top. Do not attempt this installation without this level of craftsmanship skill.

If a factory made cut is provided, only skills of using a screwdriver and drill are required.

Space considerations for installation



Nominal thickness of the desktop should be 30mm (1.181") within a range of 1" to 1.25" for lock system to install. (25.4mm to 31.75mm)

The work space between the user edge and the cutout should be 8.5" (215.9mm)

The minimum depth of the top is 26" (660.4mm)

FIL-18 minimum width space requirement is 24" (609.6mm)

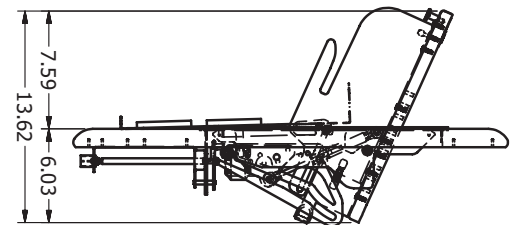
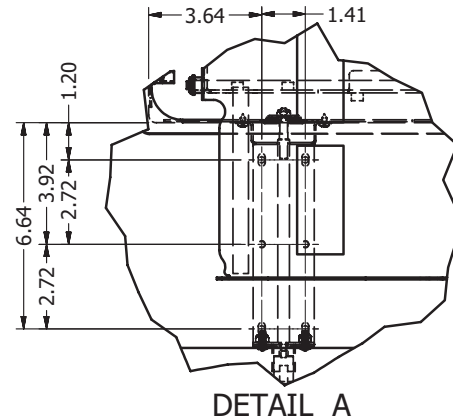
FIL-23 minimum width space requirement is 26" (660.4mm)

Allow about 9" (288.6mm) above and 8" (203.2mm) below for clearance of the lid opening.

Cutout dimensions:

FIL-18 19.13" wide x 15.25" deep (485.9mm x 387.35mm)

FIL-23 25.13" wide x 15.25" deep (638.3mm x 387.35mm)



Parts and Hardware

The flipIT® Laptop Safe is packaged with a parts box that includes a packet of parts and the lock assembly, this assembly manual and a paper template. Here are the contents you should find:



FIL-18 (X30238)
FIL-23 (X30206)



In the parts bag:

- **A** Four Neoprene pads, adhesive-backed
- **B** One dead bolt stud with 3/16" hex head
- **C** Two self-tapping #6-32 1/2" metal screws
- **D** Six wood screws #8 5/8" pan head
- **E** 3/8" hex nut with stop collar
- **F** Four 3/4" #6 pan head Phillips drive screws
- **G** Four one-way wood screws
- **H** One bumper cap

In the lock bracket bag:

- **A** One Interlock bracket
- **B** One lock assembly
- **C** Two keys
- **D** Two one-way metal screws



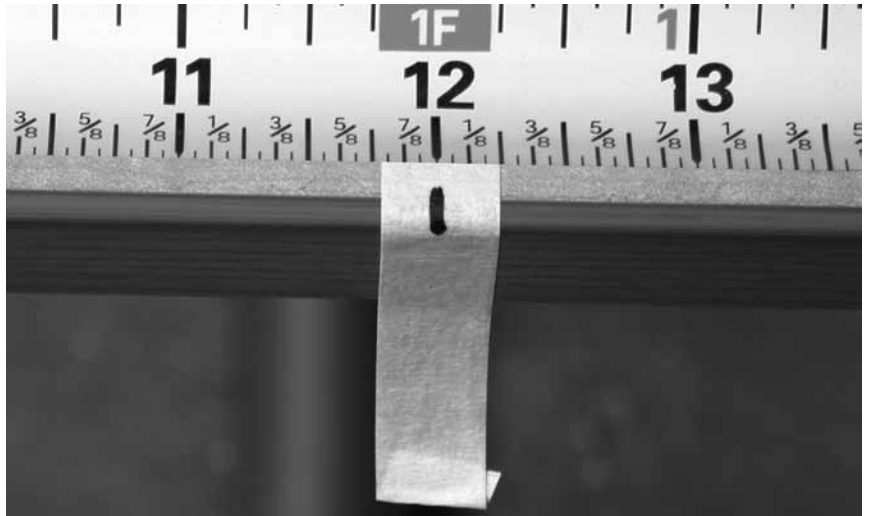
Step 1

Establish a center line for your flipIT® Laptop Safe.

The center line for FIL-18 is 12" in a 24" minimum width space.

The centerline for FIL-23 is 13" for 26" minimum width space.

Use a bit of masking tape and mark the center line on the edge of your furniture.



Step 2

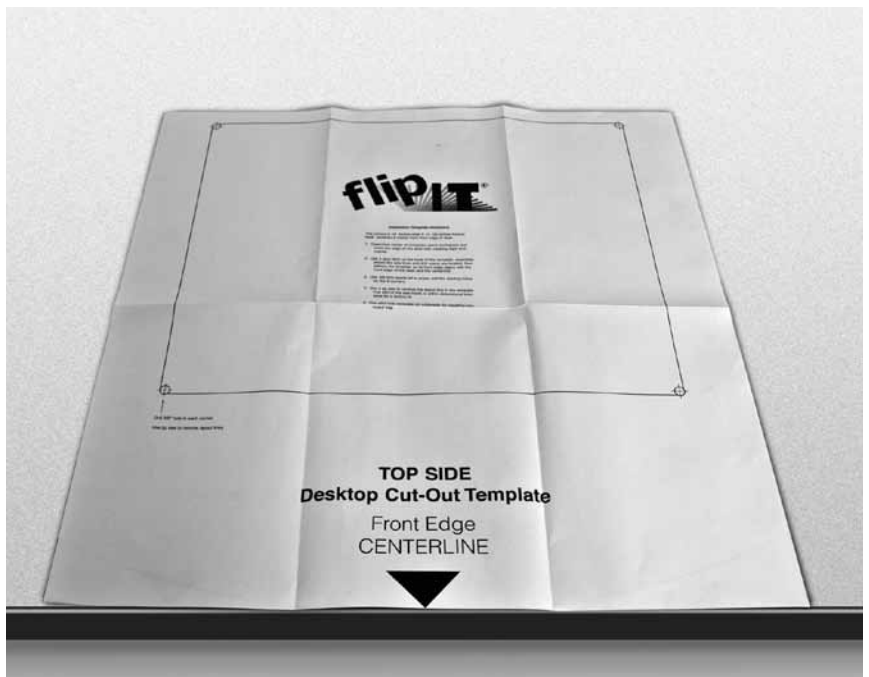
Use a glue stick on the back side of the template. Spread water soluble glue covering the layout lines for the cut on the reverse side.



Step 3

Align the template center line with the center line you marked on your furniture. Make sure the template is square with your furniture edge.

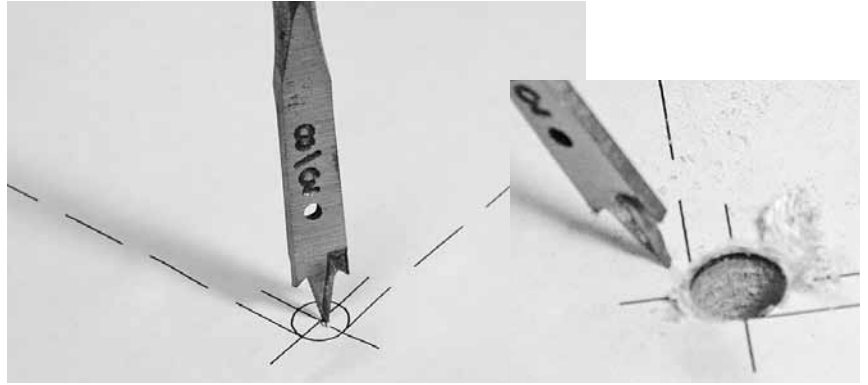
When you press the template into position, the glue will overcome the wrinkles in your folded paper template. As you do this, check to make sure everything is aligned square.



Step 3

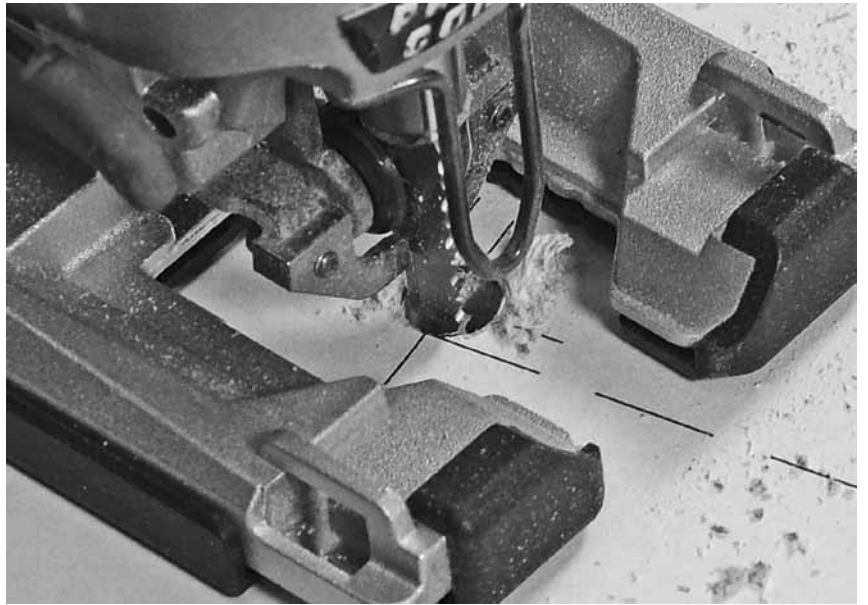
Use 3/8" drill bit and power drill to make one hole in each corner of the template.

The center of the guide should be the center of your hole.



Step 4

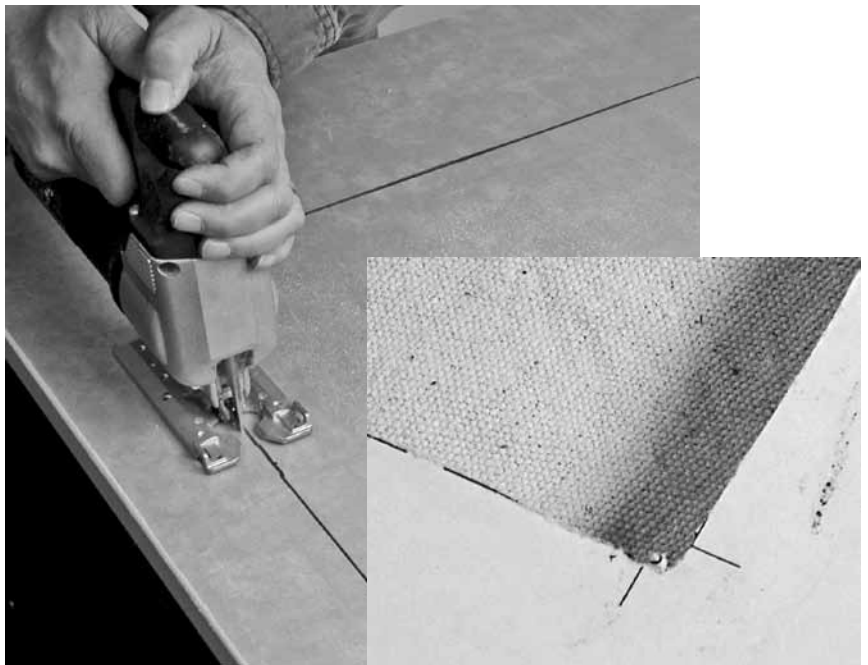
Use power jigsaw and fine finish wood saw blade. Make your kerf remove the line on the template.



Follow the four lines between holes and make the cut-out. Remove the line with your saw cut. The detail shows a good cut. A hint of the layout line may remain. The metal collar of the flipIT® unit will cover the irregularities for a perfect fit and finish.

Remove any template remains from the furniture. Glue stick is water soluble and a moist paper towel or cloth will do the trick.

You should now have a cutout made to factory specifications.



Start here for installation into factory cutout:

Step 5

Using a Phillips #2 screwdriver, tap threads in the pilot holes with the #6-32 1/2" self-tapping sheet metal screws.



Place the lock assembly into position and install self-tapping metal screws. Remove one screw and slide the lock assembly over the head into the slot. Tighten until just snug. Then screw the second screw in place and tighten until snug. Make sure the lock assembly is level.

Do not fully tighten. This assembly will be adjusted to match up with your desktop furniture thickness within 0.2" range of tolerance. The slots in the lock assembly are elongated for this purpose.



Step 6

Press the bumper cap onto the end of the interlock bracket.



Step 7

Install the interlock bracket bumper-end down so the pin goes through the hole in the collar plate of the flipIT® unit and through the hole in the lock assembly. The threaded end of the lock bar goes through the hole in the flipIT® unit collar and through the hole in the interlock bracket.



Step 8

Install the interlock bracket to the threaded end of the lock bar with a 3/8" hex nut with stop collar. Tighten fully against the interlock bracket with 3/8" open-end wrench. There should be no play in the interlock bracket.



Step 9

Install the dead bolt stud into the threaded insert in the flipIT® unit lid. Use a 3/16" hex key.

The slot in the interlock bracket will capture the dead bolt stud in the locked position.



Check the operation of the lock. Push the lock button without the key to lock. Use the key to unlock. The assembly should slide into the locked and unlocked position easily, yet still be loose enough to adjust slightly up and down.



Step 10 Install flipIT® Laptop Safe in furniture top



Flip the unit over and grasp it by the lid. The unit will open to the first stop of its opening sequence.

Plunge the lock assembly through the cutout and move the collar to the user side of the cutout.

The unit should come to rest in its cutout, ready for installation.

Opening is a 3-step process Before installing the gas spring (Step 14), you need to provide an assist. Complete steps 11, 12 and 13 before installing the gas spring. The spring's force works against your installation.



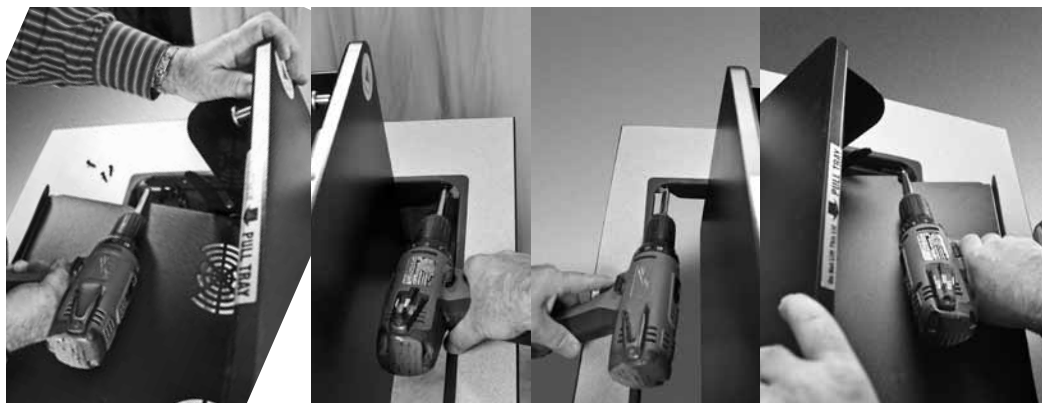
Press on the back of the lid. You will have to operate the touch latch by pressing on the front and give force to the back, which is normally provided by the gas spring.

Grasp the tray and pull, still pressing down on the back of the lid to assist.

Pull the tray all the way open. In this position, you can place the gas spring into position, and it will supply the opening force. For normal operation, the lid is opened by pressing the touch latch and pulling the tray to open.

Step 11

Install the unit with four 3/4" #6 Pan Head Phillips Drive wood screws.



Step 12

On the under side, drill six 1/8" pilot holes 1/4" deep into core. Install six #8 x 5/8" pan head screws through the lock assembly into the core.



Step 13

Adjust the lock bar until it is parallel to the top. Actuate the plunger lock to make sure the lock assembly is operating smoothly.

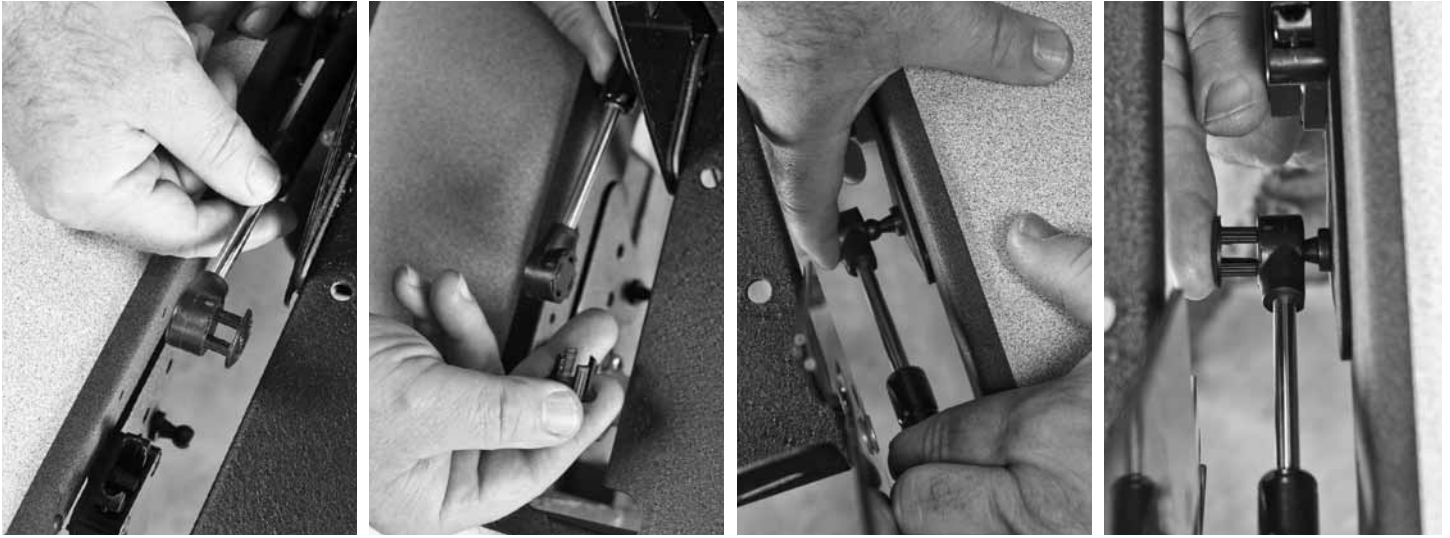
Push the plunger without the key and unlock with the key. When operating smoothly, tighten the lock assembly to the flipIT collar frame.



Also tighten the two screws with the 3/8 open end and a Phillips #2 screwdriver at the lock flange.

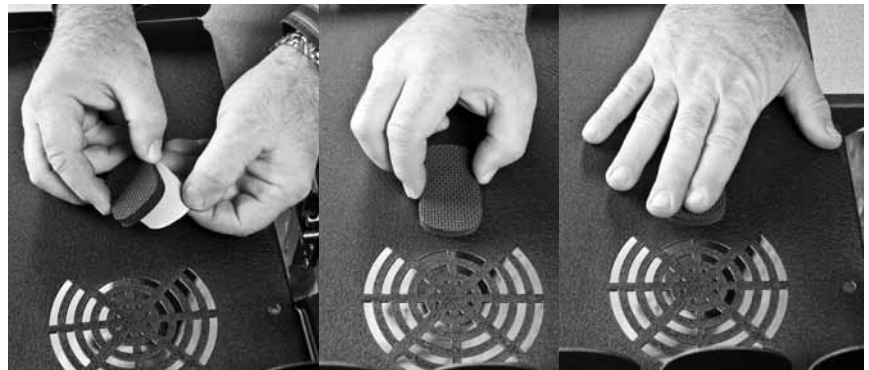
Step 14

Install the gas spring. Remove the locking hub, which may be done using a slotted screwdriver blade. Press the fitting onto the stud on the flipIT® frame. Replace the locking cap and press to secure it.



Step 15

Install four Neoprene pads. Peel the backing off, align the pad in the space and press into position. The adhesive is forgiving if you need to pick up and try it again.



The positions shown work well for a range of laptop sizes. The pads protect the laptop surface and make an air gap for better heat dissipation. Vents are also provided for this purpose.

