

8120 SCULPTURED TASK CHAIR

OPERATING INSTRUCTIONS



FEATURES

• HEIGHT ADJUSTMENT

To raise seat, remove pressure from seat and lift lever (1). To lower seat height, sit on chair and lift lever (1).

NOTE: It is normal for chair to slightly lower under body weight.

• BACKREST HEIGHT ADJUSTMENT

Loosen upper knob on Backrest post to raise or lower the height of Backrest. **TIGHTEN KNOB COMPLETELY.**

• SEAT DEPTH ADJUSTMENT

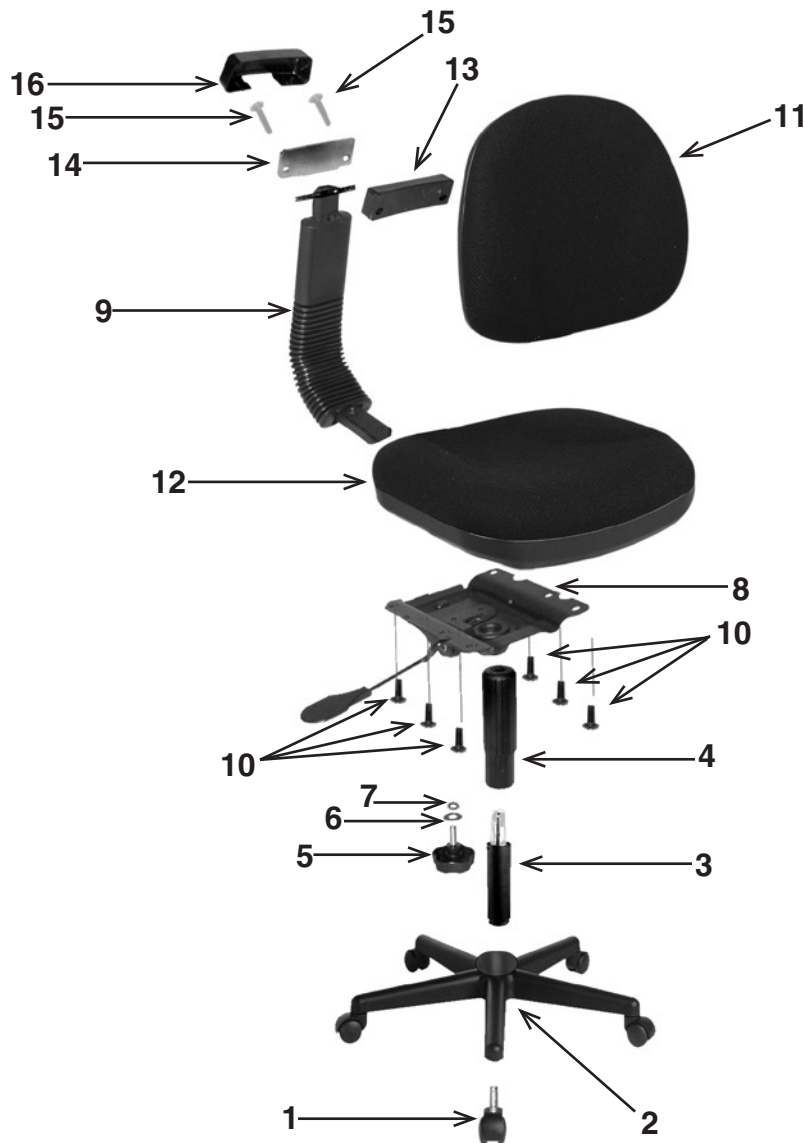
Loosen knob underneath chair, slide Back assembly in or out to desired position. **TIGHTEN KNOB COMPLETELY.**

WARNING

1. Use this product only one person at a time.
2. Do not use this chair unless all bolts, screws, and knobs are securely tightened.
3. Check that all bolts, screws, and knobs are tight every three months or as needed.
4. Dispose of packing material properly. Do not use plastic cover as head covering. It may cause suffocation.
5. Do not use this chair as a stepladder.
6. Use this chair for its intended purpose only.
7. Use mild detergent only for cleaning.

8120 SCULPTURED TASK CHAIR

ASSEMBLY INSTRUCTIONS



PARTS	QTY
1. Casters	5
2. Base	1
3. Pneumatic Cylinder	1
4. Plastic Bellows	1
5. Backrest Depth Adjustment Knob	1
6. Flat Washer	1
7. Lock Washer	1
8. Mechanism	1
9. Back Frame	1
10. Small Machine Screws	6
11. Back Rest	1
12. Seat	1
13. Backrest Plastic Plate	1
14. Backrest Metal Plate	1
15. Large Machine Screws	2
16. Backrest Plastic Cover	1

Remove all parts from carton, separate them into part numbers as indicated on the Parts List and make sure part quantities are correct.

STEP 1 Insert five Casters (2) into Base (1), push hard until you feel or hear the Caster (2) snap into place.

STEP 2 Insert Pneumatic Cylinder (3) into Base (2), slide plastic Bellows (4) over Pneumatic Cylinder (3).

STEP 3 Align holes of Back Rest (11) to Backrest Plastic Plate (13). Place Back Frame (9) flush into Backrest Plastic Plate (13), align Backrest Metal Plate (14) and secure assembly with two Large Machine Screws (15).

FULLY TIGHTEN SCREWS. Cover with Backrest Plastic Cover (16).

STEP 4 With arrows facing the front of chair attach Mechanism (8) to Seat (12) using six Small Machine Screws (10).

Slide Back Frame (9) with attached Back Rest (11) between Seat (12) and Mechanism (8). Secure with Backrest

Depth Adjustment Knob (5) through Flat Washer (6) and Lock Washer (7). **FULLY TIGHTEN ALL SCREWS AND KNOB.**

Place Upper assembled portion of chair onto Pneumatic Cylinder (3) and apply downward pressure.

ATTENTION: MAKE SURE ALL SCREWS ARE FULLY TIGHTENED BEFORE USING CHAIR.