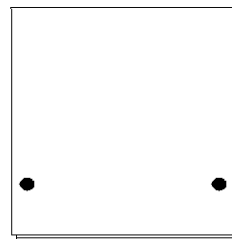
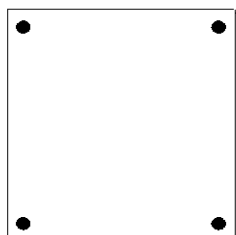
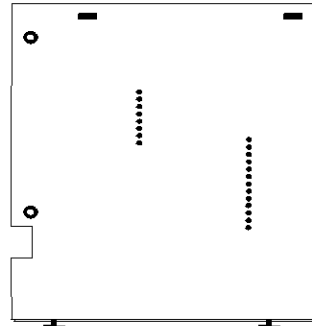
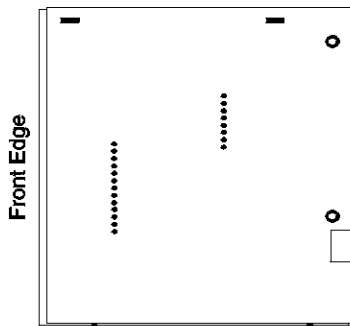
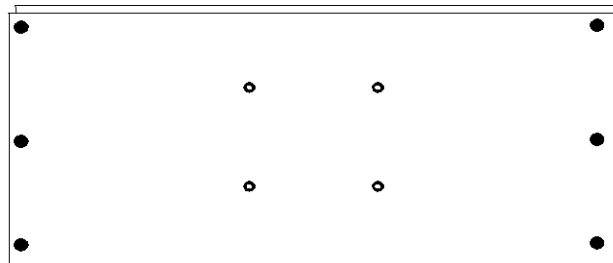
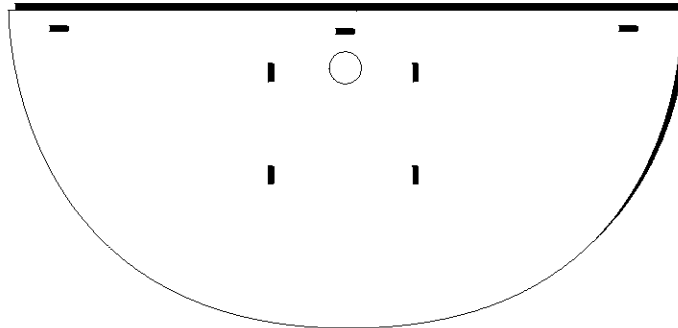


## Panel List

**Note: Separate and stack panels by like types before beginning assembly process.**

1 Desk Top Panel • 1 Back Panel • 2 Center Support Panels • 1CPU Bottom • 1 Adjustable Shelf

- = Cam Fitting
- = Cam Hole
- = Screw Hole/Spoon Pin
- = RV Fitting



Smartdesks are packaged ready to be assembled. Included is a Master Parts and Panel List showing diagrams of all parts and hardware required for assembly. Please note, improper installation may void the Smartdesks warranty. To install correctly follow the enclosed instructions. If you need additional assistance or information please contact Technical Service at 410-922-6005. © Copyright Smartdesks 1999. All rights reserved.

## Hardware Inventory Sheet

**2 persons are needed to assemble Smartdesks Model DemiKB 60/72**

### Unpack Parts and Hardware:

Parts and panels will vary according to Smartdesks model. See Parts & Panels List and Hardware Inventory Sheet. Please verify all parts and quantities prior to assembly. Contact the factory if your quantities are incomplete. *Note: All panels are predrilled ready for assembly.*

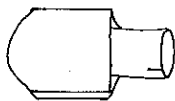
*Note: Also included in this package is a premanufactured keyboard/mouse platform support assembly for use with keyboard/mouse platform. Please follow separate assembly instructions.*

### Tools needed for assembly:

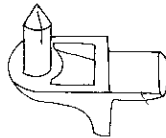
**Power drill with #2 Phillips screwdriver bit and regular #2 Phillips screwdriver.**

The following diagram shows the contents of the hardware bag.

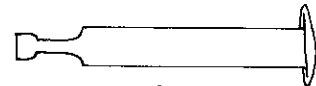
**Contents of Hardware Bag : (quantities for each desk - multiply by number of desks)**



**2 ea.- Shelf Spoon Pins**  
CPU Shelf (front holes)

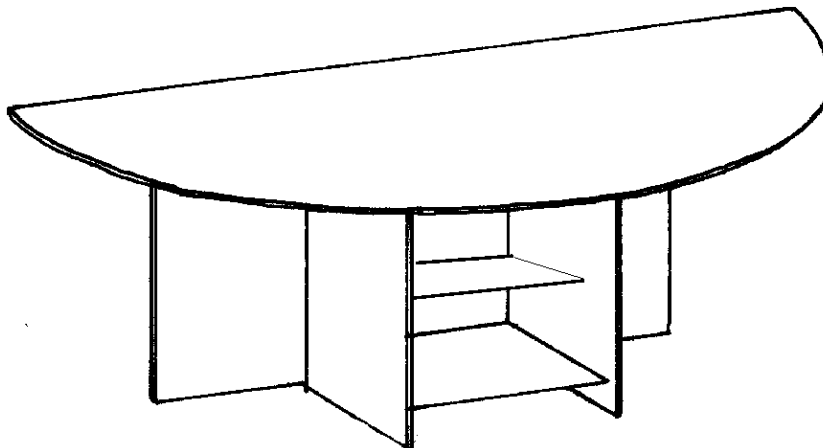


**2 ea. - Earthquake Pins**  
for Convertible CPU Shelf  
(Rear holes only)



**8 ea. - Cam Pins**  
push through holes in  
panels. (Back Panel,  
Support Panels)

Smartdesks have been designed and tested as an ergonomically correct and space saving unit. For more information on this and other Smartdesks products, call 1-800-770-7042 or visit our website at <http://www.smartdesks.com>



**Smartdesks Model DemiLT 60/72**

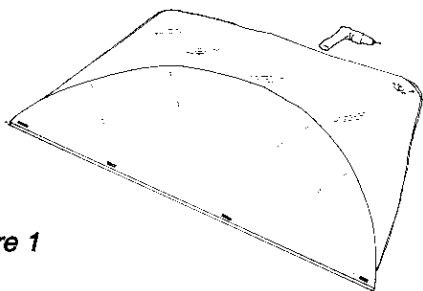


Figure 1

### STEP 1 - Desk Top & Center Support Assembly

In a clean work area lay Desk Top Panel with desk top facing down on the floor on cardboard or carpet/packing quilt. (Fig. 1)

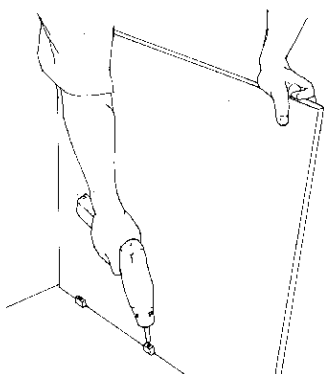


Figure 2

Lift and place Right Support Panel into 90° vertical position with fittings facing in. While holding right panel in vertical position, match RV Fittings to one another and snap panel into place. Use power drill to tighten the screw contained in the RV Fitting. (Fig.2) Each RV Fitting contains a screw to lock the hardware once the panels have been snapped into place. Warranty is void if all locking screws have not been tightened. RV Fittings come preinstalled in panels and are equally spaced along Desk Top edge. Tighten all remaining RV Fittings along panel edge. (Fig.3)

Repeat STEP 1 for the installation of the Left Support Panel.

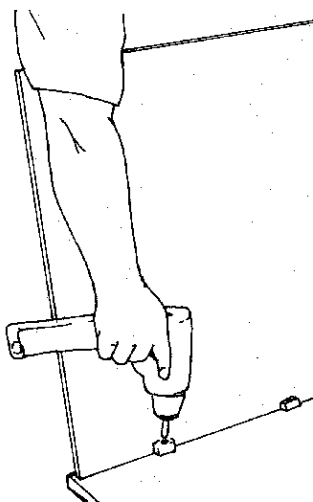


Figure 3

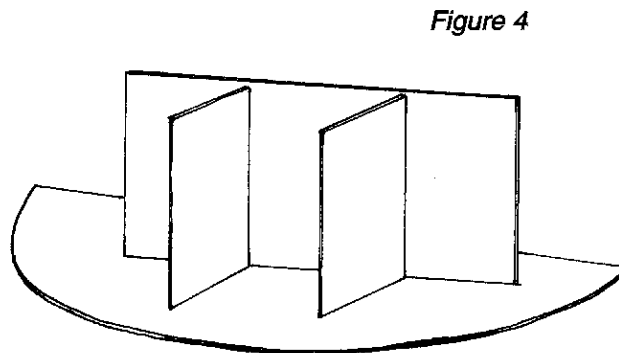


Figure 4

### STEP 2 - Assembly of Back Panel To Left and Right Supports

*NOTE: 2 person assembly required for proper fit.*

Slide Back Panel into position behind two Support Panels matching the cam fittings to the holes at top. It is necessary for 2 people to accomplish this assembly. Vertical panels cannot be left standing unsupported (Fig.4) Insert top 2 Cam Pins through Left and Right Support Panels into cam fittings. (Fig. 5) Start at the top cam of each end panel when inserting Cam Pins and move down each end panel alternating as Cam Pins are inserted. Make sure arrows on Cam Pins are facing out (3 pm clock position). Tighten about 1/4 turn with screwdriver until it locks into place.(Fig. 6) Repeat this step for remaining 4 Cam Pins. The Cam Pin is a steel to steel assembly which ensures heavy duty strength when assembled.

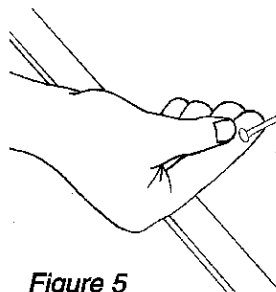
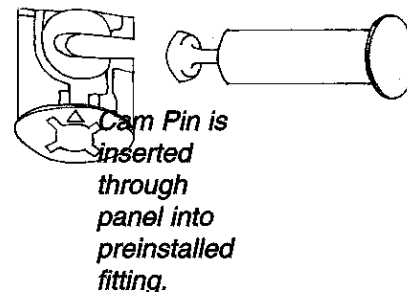


Figure 5



Cam Pin is inserted through panel into preinstalled fitting.

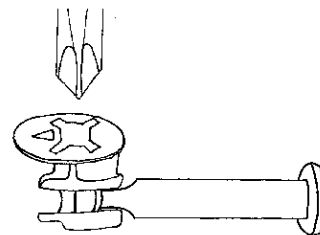


Figure 6

Check to verify that arrow is pointing perpendicular to pin when Cam is locked.

### STEP 3 - Installation of CPU Bottom

**NOTE:** 2 person assembly required for proper fit.

The CPU Bottom is not adjustable. Make sure arrows on Cams are facing out. Slide the CPU bottom into position. (Fig 7) Aligning the CPU Bottom with the predrilled holes, insert Cam Pin through the CPU Side Panel into cam fitting. Tighten with screwdriver until it locks into place. Repeat this step for remaining 3 Cam Pins. (Fig. 8)

Figure 7

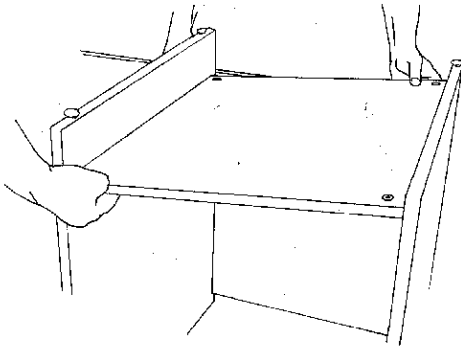
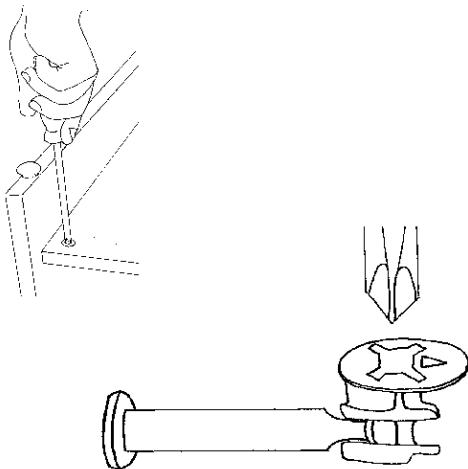


Figure 8



*Check to verify that arrow is pointing perpendicular to pin when Cam is locked.*

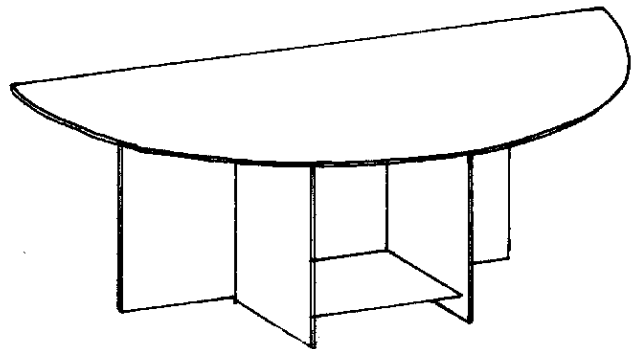
### STEP 4 - Flip Desk 180° to Upright Position

**Note:** 2 persons required for this step.

Roll desk on its back then to its upright position.

---

**Smartdesks have been designed and tested as an ergonomically correct and space saving unit. For more information on this and other Smartdesks products, call 1-800-770-7042 or visit our website at <http://www.smartdesks.com>**



**Smartdesks Model DemiLT 60/72**