

Securing of LCD Flat Display* to flipIT™ Rotating Desktop Panel

*LCD Flat Panel Monitors manufactured to the VESA (Video Electronics Standards Association) FDMI (Flat Display Mounting Interface) Standard are compatible with flipIT™ (patent pending).

STEP 1 - Mount VESA Bracket to LCD Flat Display

1A – Detach VESA Bracket from flipIT™ Panel

The **VESA Bracket** is shipped mounted to the **VESA Mounting Plate** on the **Rotating Desktop Panel** (Fig. 1). Pull the 2 locking arms out to the sides from the top of the bracket to release. (Fig. 2) Slide the VESA Bracket up and off the VESA Mounting Plate (Fig. 3). Remove the (4) 4mm machine screws attached in a bag to the back of the Rotating Desktop Panel.

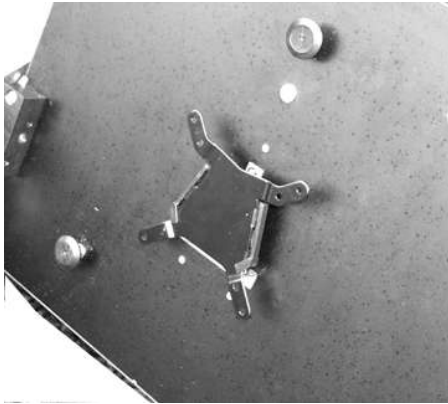


Figure 1

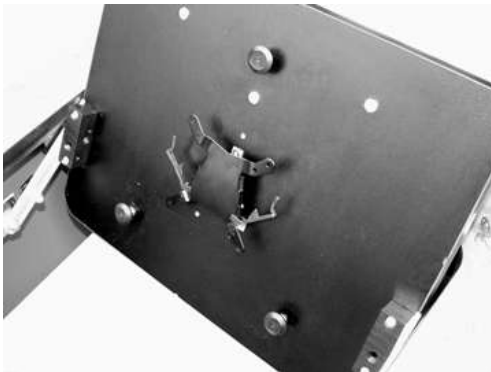


Figure 2



Figure 3

1B – Locate Mounting Holes on the LCD Flat Display

VESA FDMI Standard LCD Flat Panel Monitors are manufactured with an array of four standard screw holes in either a 75mm x 75mm or 100mm x 100mm pattern (Fig. 4) in the center of the back of the monitor. These holes may be immediately visible, capped, or accessible by removing the monitor stand or a rear cover plate on the back of the monitor. In some cases, a conversion package may be required (contact your monitor manufacturer for additional information).

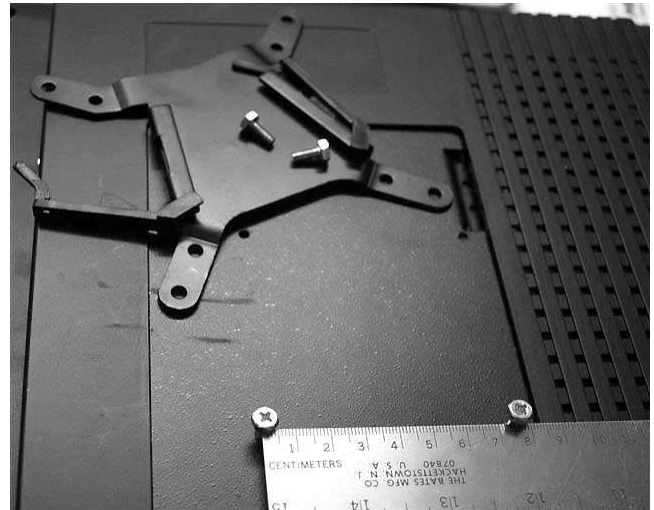


Figure 4

1C – Mount VESA Bracket to LCD Flat Display

Remove the LCD Display from its base. Lay the screen face down on a protective surface and align the inner or outer set of holes on the VESA Bracket with the holes on the back of the monitor. Attach the bracket - with the wide side toward the bottom - firmly to the monitor, but do not over tighten (Fig. 5).

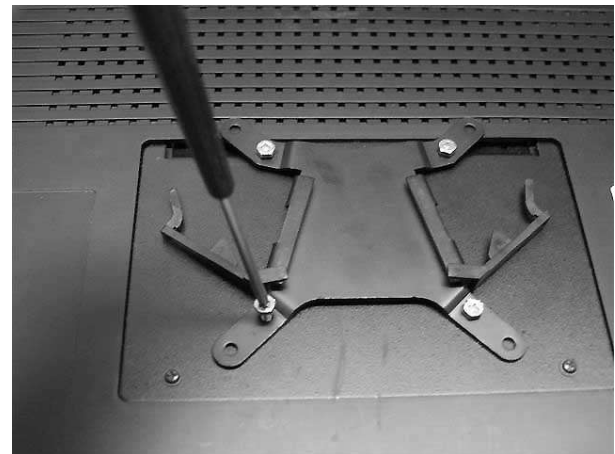


Figure 5

Securing of LCD Flat Display* to flipIT™ Rotating Desktop Panel

STEP 2 - Mount LCD Flat Display to Rotating Desktop Panel

2A – Connect LCD Flat Display Cables

Connect the monitor cables to the monitor and thread them through the Rotating Desktop Panel cutout in the worksurface and into the side of the CPU bay (Fig. 6).



Figure 6

2B – Mount LCD Flat Display to Rotating flipIT™ Panel

Hold the LCD flat display (Fig. 7) with the VESA Bracket over the VESA Mounting Plate and slide the LCD flat display downward into a seated position. The top of the LCD monitor should be at least 1/2" below the top edge of the Rotating Desktop Panel**. The monitor can hang below the bottom edge of the Rotating Desktop Panel. When the monitor is seated in the correct position on the Rotating Desktop Panel, push in or "LOCK" the arms of the VESA Bracket using a long screwdriver or pencil.



Figure 7

2C – Adjusting the VESA Mounting Plate**

****Follow instructions in this step only if the flat display is above the top edge of the Rotating Desktop Panel or is too low.** Slide the LCD flat display upward from the VESA Mounting Plate. Lay the flat display aside. There are three (3) sets of pre-drilled holes on the Rotating Desktop Panel providing 20mm of adjustment up or down for the VESA Mounting Plate (Fig. 8). Remove the (3) screws from the VESA Mounting Plate and relocate the plate to a position enabling the LCD flat display to be 1/2" to 3/4" below the top edge of the Rotating Desktop Panel (Fig. 8).



Figure 8

Pressure Pod and VESA Mounting Plate configuration

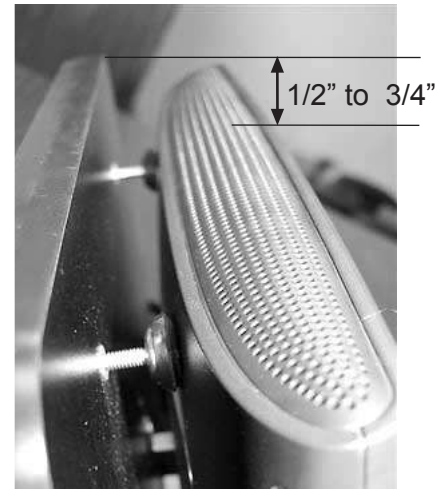


Figure 9

2D - Setting the Pressure Pods

Three (3) Pressure Pods are screwed into metal inserts in the Rotating Desktop Panel. Turn each Pressure Pod counter-clockwise to adjust their height so the LCD flat display is parallel to the Rotating Desktop Panel. Hand-tightening is all that is required to exert the proper back pressure to keep the LCD flat display in position and cushion it when the Rotating Desktop Panel is opened and closed. Carefully test the mechanism before putting the unit into use by opening and closing the Rotating Desktop Panel to be sure the LCD flat display is properly positioned and the Pressure Pods are adjusted correctly (Fig. 9).

SMARTdesks' flipIT™ Integrated LCD Workstation has been designed and tested to perform as an ergonomically correct and space saving unit. For more information on this and other SMARTdesks products, call 1-800-770-7042 or visit our website at <http://www.smartdesks.com>