

flip IT[®] kit

US Patent 7,047,890 Other Patents Pending

For use in:

- Computer Labs
- Healthcare
- Retail Services
- Defense Operations Centers
- Reception/Security Areas
- Airport Terminals
- Conference Rooms
- Financial Services
- Office Furniture
- Hotel/Hospitality
- Audio Visual Production Studios

...and More!



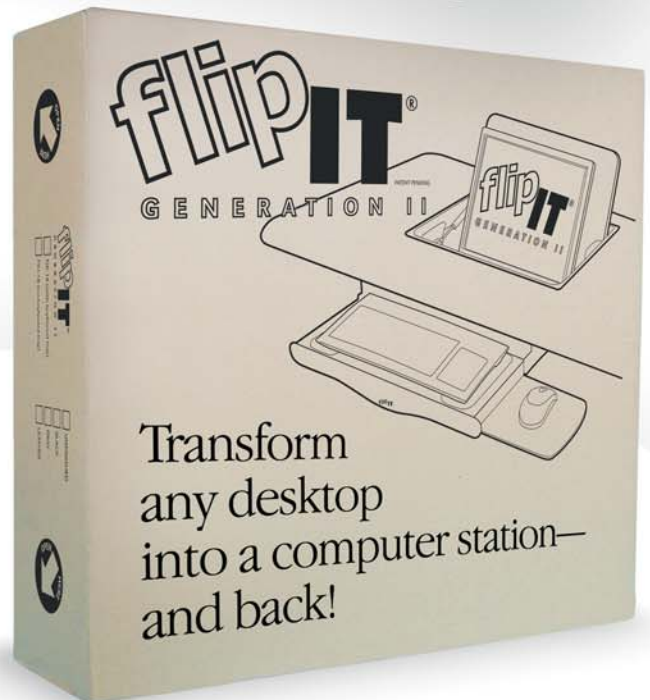
Install physical data access safeguards into any work surface!

- Protect your technology assets
- Meet HIPAA Compliance §164.310 Physical Safeguards restricting access to patient information
- Meet National Security Guidelines described in the Safety Act of 2002 for all government agencies and DoD
- Proper ergonomics for computer classrooms
- Semi-recessed and adjustable flat screen or laptop placement does not obstruct user's line of sight

SMARTdesks™

www.smartdesks.com

800 770 7042



flipIT[®] kit

US Patent 7,047,890 Other Patents Pending

for LCD Monitors and Laptops

As computer technology becomes smaller, lighter, flatter and more portable, the demand for computer furniture with secure features is increasing.

Regulations, guidelines and standards in the post 9/11 world require secure physical access to data systems, not merely asset security.

Engineered for secure, safe storage and adjustable, ergonomic comfort in use. The low profile design promotes interaction, collaboration and engagement because sight lines are not obstructed. This placement also reduces neck and eye strain.



flipIT[®] is available in three models:

FIK-18 with Keyboard Tray actuator.
For flat screens up to 17.25" across overall bezel width.

FIH-18 without Keyboard Tray, with Cable Release actuator. For flat screens up to 17.25" across overall bezel width.

FIL-18 Laptop Safe (fits same tabletop cutout as flat screen models)
16" max case width x 11.5" x 2.5"



For added security, keyed and keyless locking are available for all flipIT Kits.



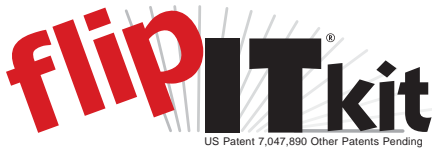
Each user can adjust screen angle $\pm 15^\circ$ to achieve the proper ergonomic viewing position and eliminate ambient lighting glare.



flipIT® Laptop Safe, Model FIL-18, has universal wire management design, which accommodates rear- and side-mounted power and data connections.



Technical Information



Specify these model numbers:

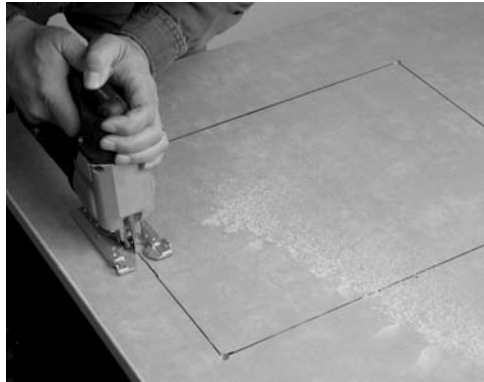
FIK-18 for the flipIT Kit with keyboard tray.

FIH-18 for the flipIT Kit with cable release and no keyboard tray.

FIL-18 for the flipIT Kit Laptop Safe.

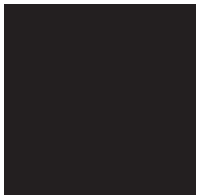
Installation requires craftsmanship skills with powertools, including a jigsaw and drill.

For larger production runs, a plywood template for plunge router or .dxf files can be provided for OEM fabricators.

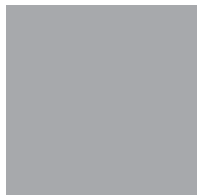


The keyboard tray requires 4.25 inches below the desktop, so plan your desktop height accordingly for proper knee space. Eight inches are required in front of the flipIT cut-out to provide a space for the keyboard tray to retract. If a touchscreen application is planned without keyboard tray, this space may be reduced. Absolute minimum depth clearance required is 24 inches for a 25 inch countertop mounted to a wall. 26 inches is a conservative minimum desktop depth. Flatscreen monitors vary in dimension and may impact clearance required. The weight of the monitor is required for balance for flipIT to close.

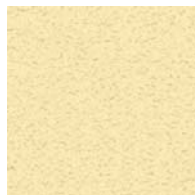
flipIT Lid Colors



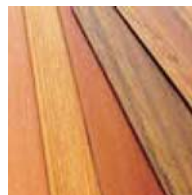
Black



Neutral Gray



Raw
(Unfinished MDF)



Custom Colors*

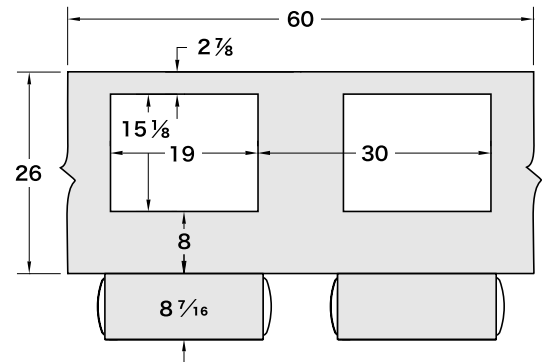
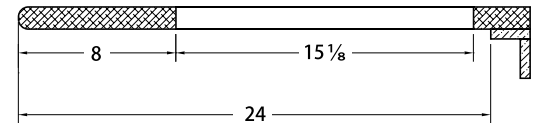
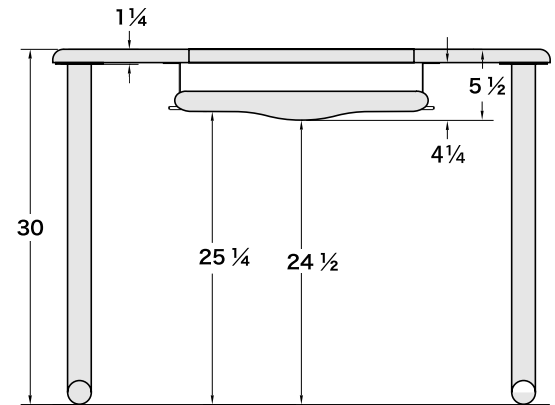
* Standard laminate colors are Black and Neutral Gray, in scratch resistant Armored Protection Surfaces™ by Nevamar. Also available in unfinished MDF. Color matches to existing work surfaces in custom laminate can be quoted upon request.

All finished metal parts are standard in black powder coat; however, special order RAL color matches can be accommodated on a custom order basis.

Go Ahead and flipIT®



A gentle pull on the keyboard tray rotates the flat screen into an ergonomic, semi-recessed position for use.



If multiple flipITs are to be installed, allow 30 inches minimum spacing from point to point.



Mousing platform extends for right- or left-handed users.

For the latest technical information, go to:

<http://www.smartdesks.com/flipit-kit.asp>



www.smartdesks.com

800 770 7042