

The miniBrig™ for the Mac mini®

This is the fully assembled miniBrig™ for holding multiple Mac mini® CPUs. Two sets of posts are provided. The assembled product is shown with the shorter posts, which permit up to 2 Mac mini® CPUs to be installed.

Note that the upper bracket installs with the table leg bracket with the bracket tail oriented to the back, away from the user. The beta pin, inserted through the small hole, captures the Brig™ fixture. A larger hole is provided for use with a padlock (purchased separately, not included). A cable tie might also be used as a theft deterrent.



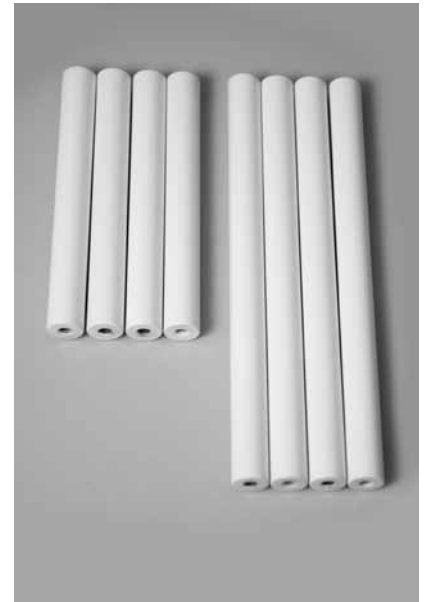
PARTS



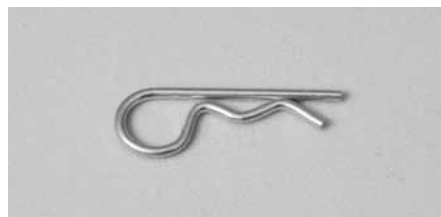
Leg bracket assembly: U channel, capture plate and 4 slide guide bolts.



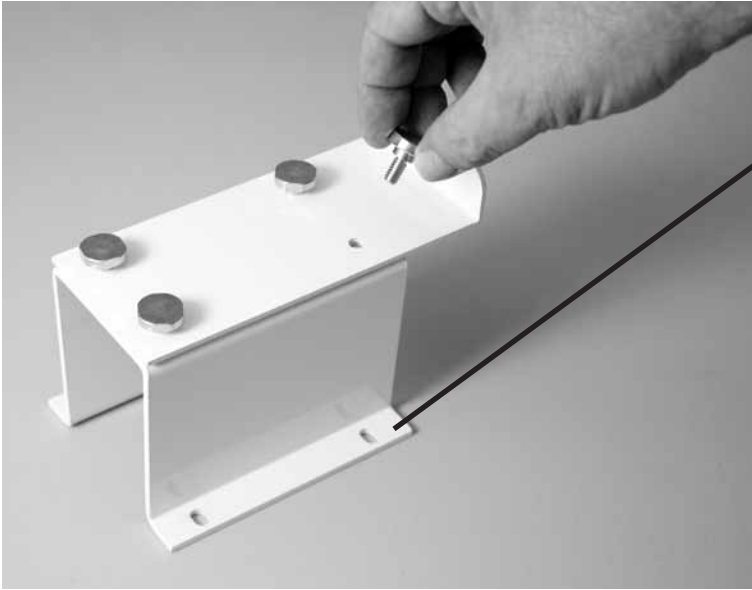
Brig assembly: Top plate with slide guides, bottom plate. Below, beta pin.



Posts: 2 sets of 4 with threaded ends to be used with 8 Phillips head metal screws.



ASSEMBLY



1. Place the capture plate on top of the U-channel bracket as shown, with capture flange pointing up. Install 4 slide guide bolts to complete the assembly.

This assembly mounts to the table leg, using the 4 bolts in the middle of the table's leg bracket. The tail of the assembly is oriented to the back, away from the user.

SHOWN EMPTY

The Mac mini[®] CPUs are placed in the miniBrig[™] before affixing the top plate.



2. Using the 8 Phillips head metal screws, install 4 posts of same length to the bottom plate and top plate.

3. The miniBrig[™] slide guide bolts are captured by the leg bracket. The beta pin installs in the small hole in the tab of the top plate. A large hole is provided for use with a personal padlock or cable tie.



The miniBrig[™] for the Mac mini[®]



www.smartdesks.com
800-770-7042

© 2009 CBT Supply, Inc. All rights reserved. Mac mini[®] is a registered trademark of Apple Computer, Inc. miniBrig[™] is a trademark of CBT Supply, Inc. This product offering is not an endorsement by Apple Computer, Inc.