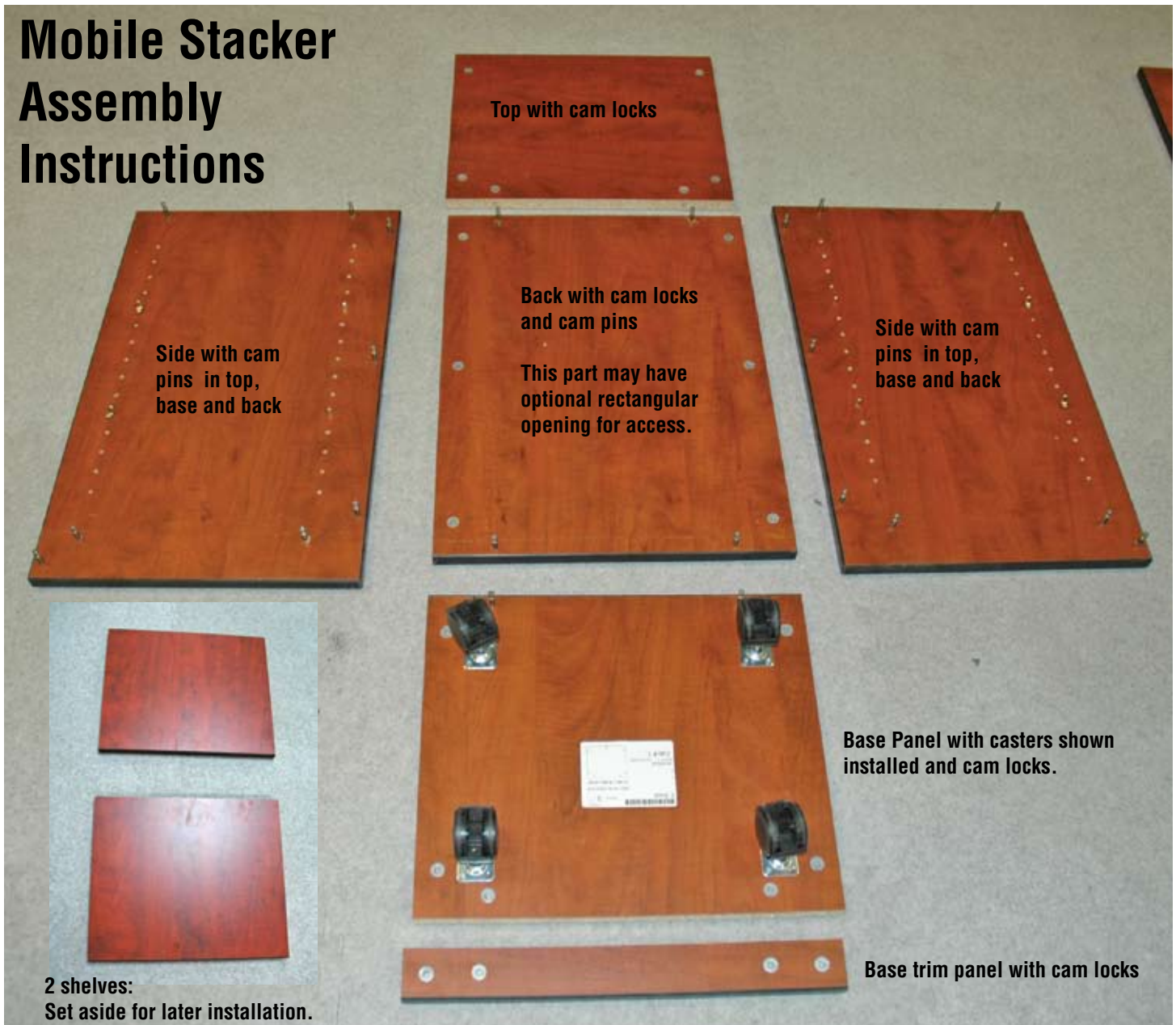


Mobile Stacker Assembly Instructions



Lay out the Mobile Stacker parts on a carpeted floor or on soft blanket. Install cam locks and cams into the locations provided. Install casters into the base panel.

Note how the cam pins and cam locks align in the parts layout above.

Cam pins are installed by inserting them in the holes provided. Expand the fitting by tightening the Phillips head cam pin top. >

After the cams and pins are installed, install the casters with wood screws and begin assembly.



1. Assemble the Base Trim Panel to the Base Panel by capturing the cam pins in the cam locks. Turn the cam locks to complete the capture.



2. Assemble the Base Panel to the Back Panel by capturing the cam pins in the cam locks. Turn the cam locks to complete the capture.



3. Assemble top to back in the same way as the base panel.

4. Assemble side to top back and base assembly.

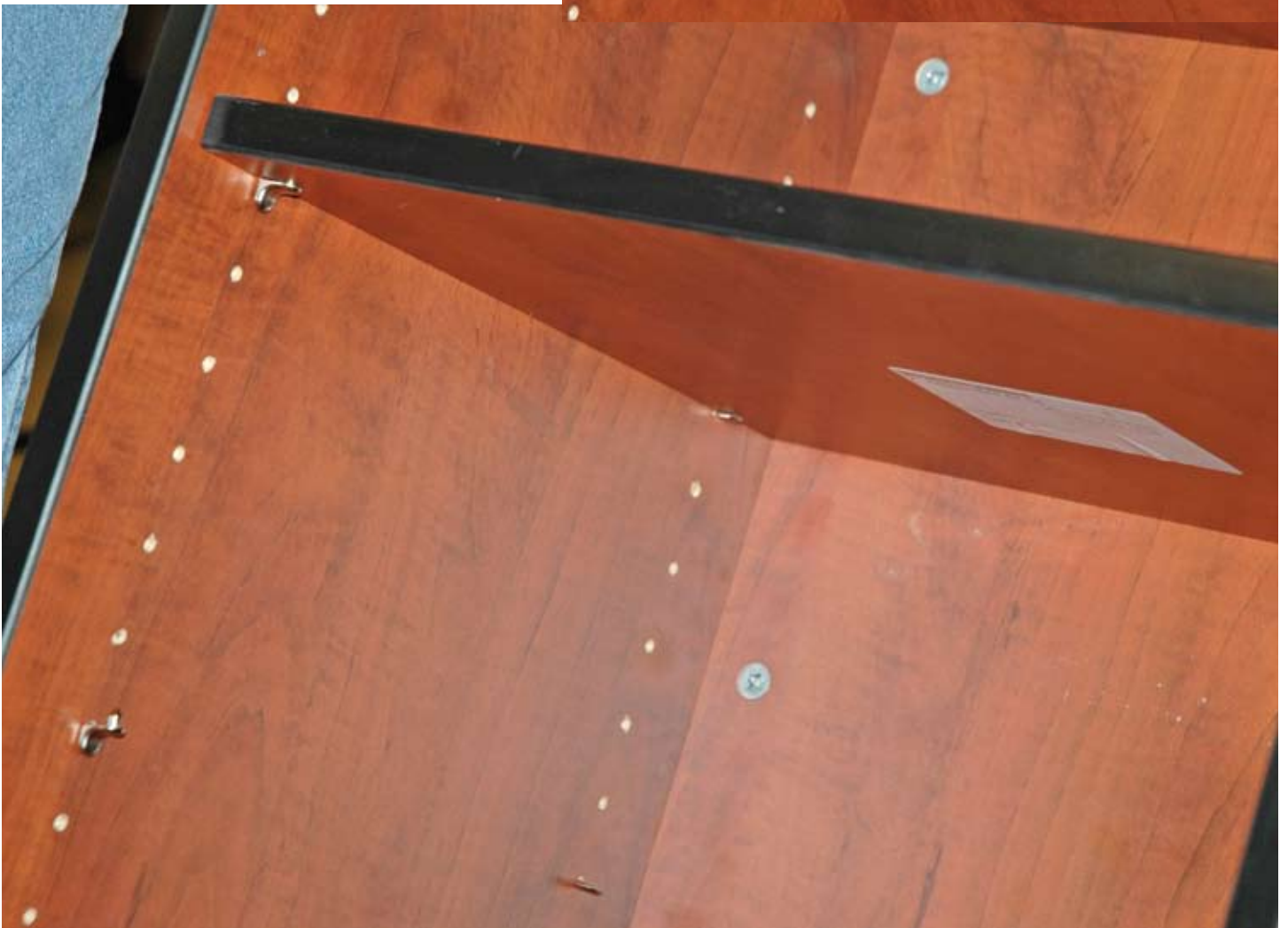
4.5 Remember to lock the cam from the base trim plate to the side, and the base panel to the side.

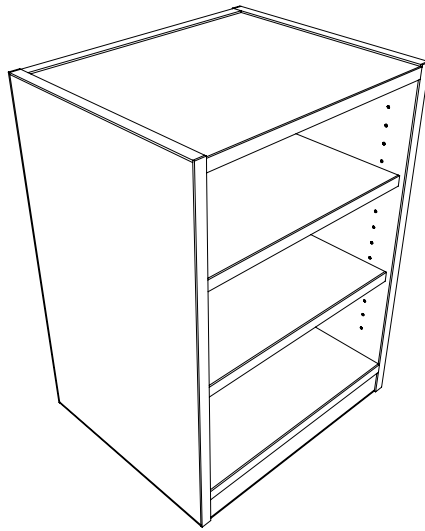
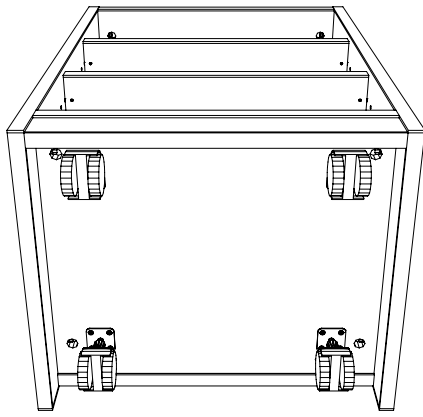


5. Assemble the second side by capturing the cam pins in the top, back, base and base trim panel, turning the cam locks to complete the capture.

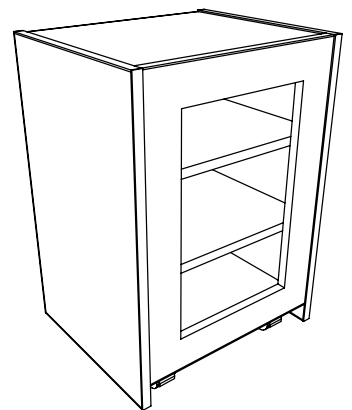
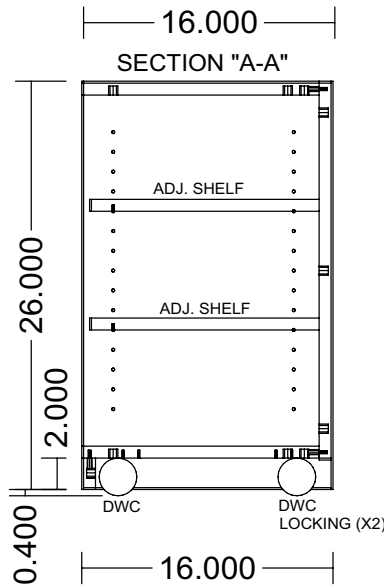
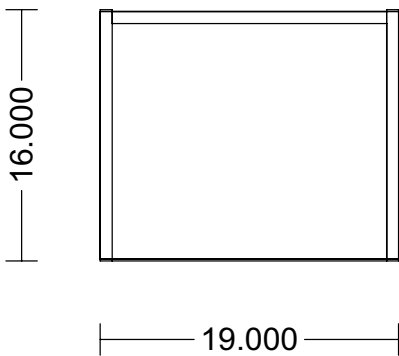
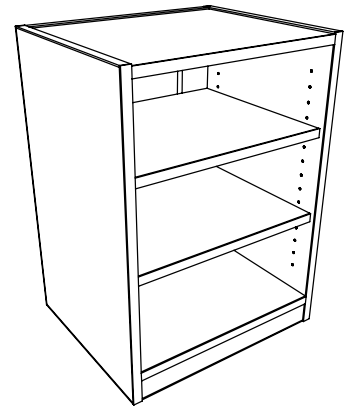
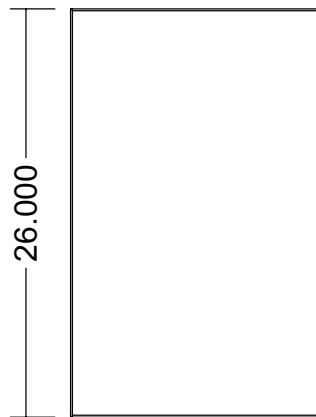
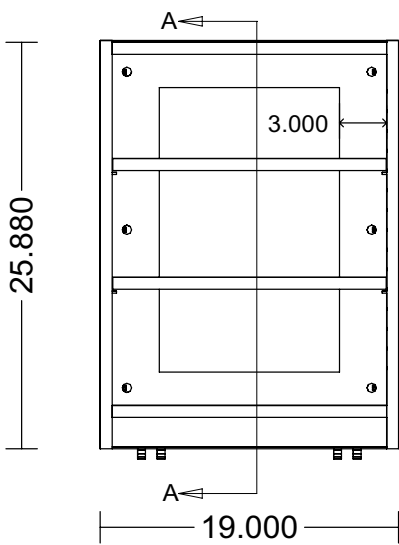


6. Install shelf pins. The front pins have a spike that fits into holes drilled in the bottoms of the shelves. The back pin is flat, and the shelf simply lays on it.





The completed Mobile Stacker.



800-770-7042 www.smartdesks.com

