



# PIANO



Orchestrating  
People and Technology



# PIANO

P R E S E N T I N G

P L A N N I N G

L E A R N I N G



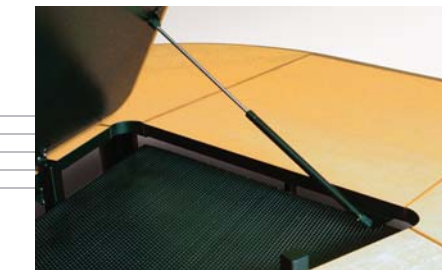
PIANO builds technology into a scalable, Line-of-Sight Interactive Conference and Training Table to enhance communication and encourage interaction.

Data and equipment are accessible, yet protected and out of the way when not in use. Additional seating is possible.

The patent pending flipIT<sup>®</sup> system provides ergonomic positioning of the LCD display to make extended work sessions less fatiguing.

Line-of-sight is unobstructed... the flipIT<sup>®</sup> LCD display is slightly lower than a laptop's.

PEOPLE INTERACTING AND NETWORKING ON-SITE



The PIANO lid is raised to full-stick with pneumatic assist for easy access. Multi-tiered, hinged, perforated chassis let you easily manage cables and mount components. Tiers are hinged for multi-level access. Provides complete, natural ventilation.



Push-mount wire clip system allows fast, neat installation. Bayonet snaps lock into chassis holes for fast, neat installation. Clips available in six sizes from 0.187" to 1" (4.7mm to 25.4mm). Snaps can be released and reused.



Supports creative configurations! Options for installing any manner of hubs, peripherals and components are completely open to the imagination of the IT professional.



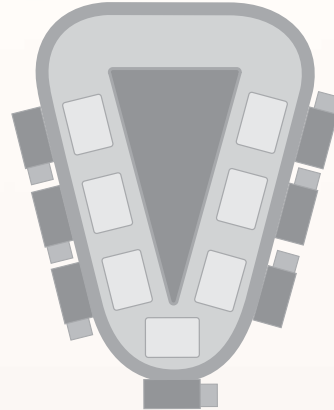
## PIANO SOLO

5



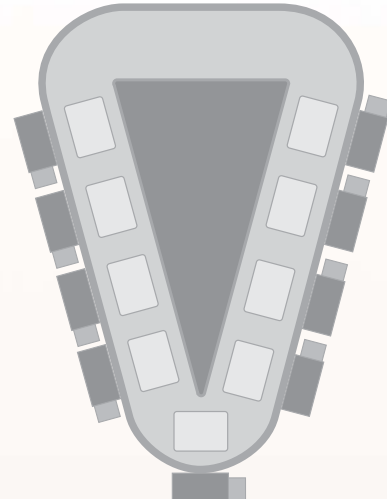
Seats five with flipIT stations, up to 12 with flipITs secured, in a space sized 15' 7" x 14' 2"  
Footprint =  
Closed 9' 7" x 7' 6"  
Open 10' 7" x 9' 2"

7



Seats seven with flipIT stations, up to 14 with flipITs secured, in a space sized 17' 9" x 15' 4"  
Footprint =  
Closed 11' 9" x 8' 8"  
Open 12' 9" x 10' 4"

9



Seats nine with flipIT stations, up to 16 with flipITs secured, in a space sized 20' 6" x 16' 8"  
Footprint =  
Closed 14' 6" x 10'  
Open 15' 6" x 11' 8"

## PIANO

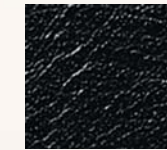
### Every Piano made to order...

Starting with the wedge shape and working within technical and human factors parameters, we design and build your PIANO to suit your specified aesthetic and functional requirements.

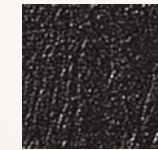
Special attention is paid to detail. The rotating flipIT® panel may be finished as a fine leather blotter in 6 colors. Woodgrain laminates selected for PIANO incorporate superior scratch resistance and practical elegance when combined with a matching or contrasting solid wood edge beautifully shaped to encounter human touch.

Request your free design evaluation form online.

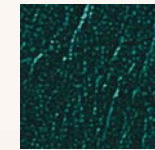
### Leatherlam® Blotter Colors



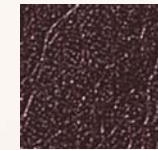
Caviar



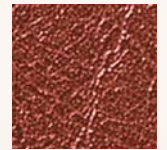
Chocolate



Oasis



Bordeaux



Cashmere

### Standard Woodgrain Finishes



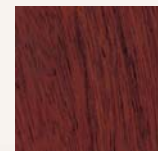
Crown  
Cherry



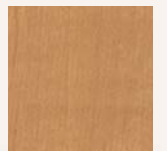
Carmel  
Sagawood



Sovereign  
Cherry



Crest  
Mahogany



Siren  
Maple



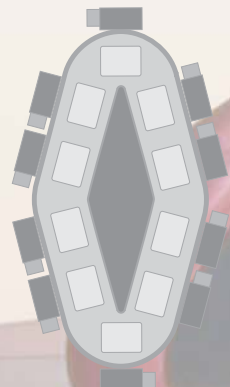
Regency  
Mahogany



Grand Isle  
Maple

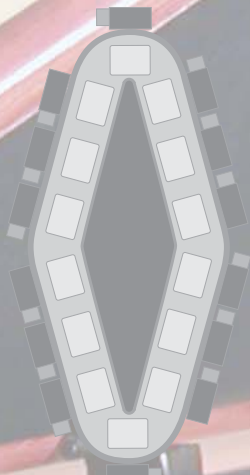
## PIANO DUET

10



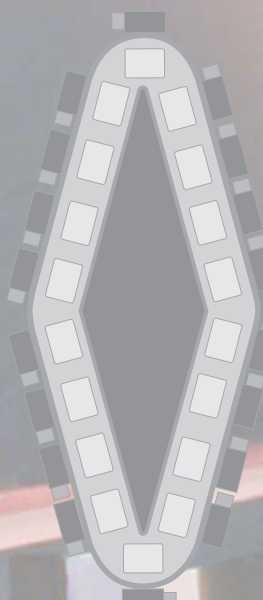
Seats ten with flipIT stations, up to 16 with flipITs secured, in a space sized 21' 2" x 14' 2"  
Footprint =  
Closed 14' 2" x 7' 6"  
Open 16' 2" x 9' 2"

14



Seats fourteen with flipIT stations, up to 20 with flipITs secured, in a space sized 25' 6" x 15' 4"  
Footprint =  
Closed 18' 6" x 8' 8"  
Open 20' 6" x 10' 4"

18



Seats eighteen with flipIT stations, up to 24 with flipITs secured, in a space sized 31' x 16' 8"  
Footprint =  
Closed 24' x 10'  
Open 26' x 11' 8"