



EVO<sup>®</sup> 5902

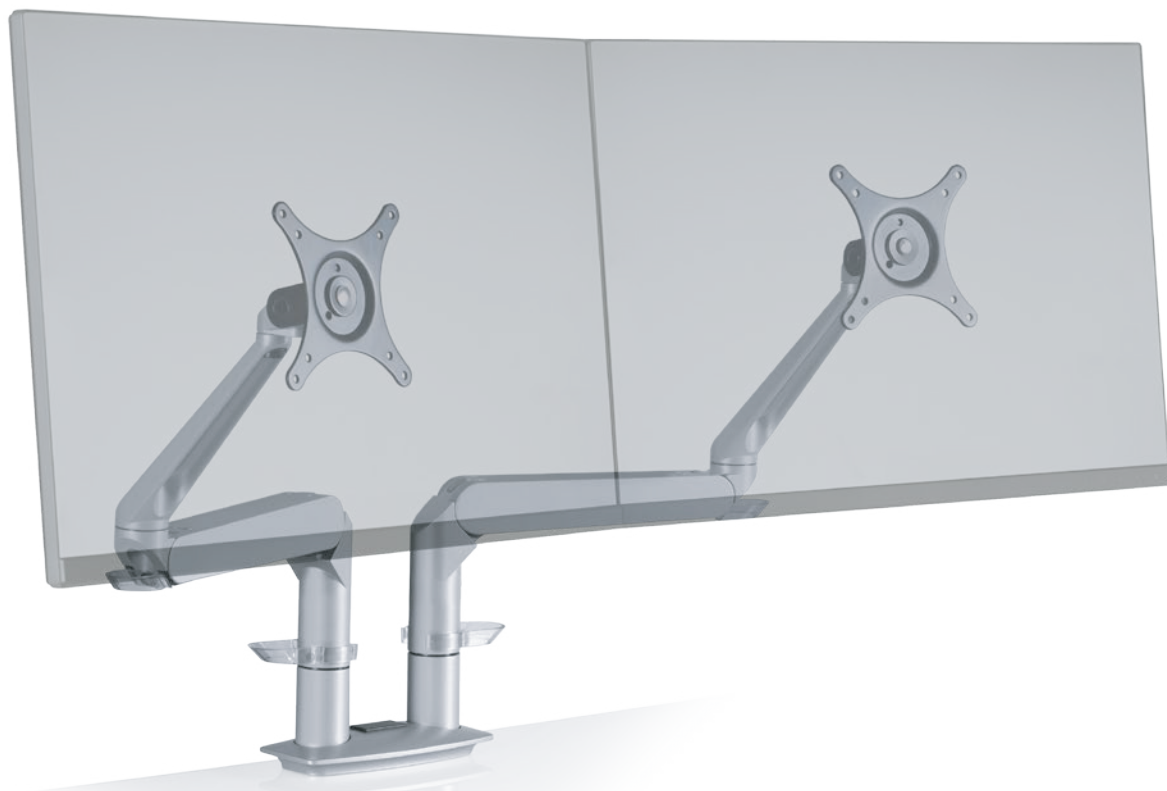
The Dual EVO<sup>®</sup> monitor mount utilizes our EVO<sup>®</sup> monitor arm in a dual monitor desk mount application. The monitor arms provide intuitive function and dual monitor rotation for easy, ergonomic viewing of both screens.

Marketed by



[www.smartdesks.com](http://www.smartdesks.com)

800 770 7042



#### FEATURES

- Extremely flexible positioning of dual flat panel monitors.
- Ease-of-use encourages users to work with their dual monitors ergonomically.
- Rotate dual monitors for portrait or landscape viewing.
- Tension adjustment at each joint.
- Mount design includes a cable management system that routes cables beneath the monitor arm.
- Durable, quick-install VESA adapter reduces installation time.

#### AVAILABLE OPTIONS

5902

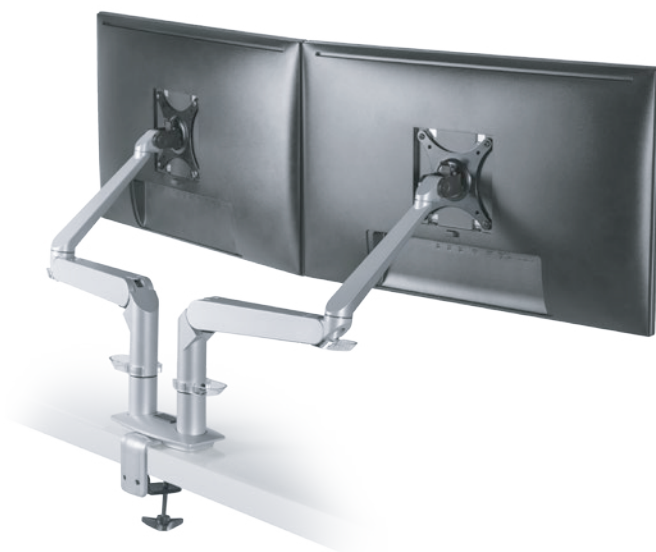
Supports 1 - 12 lbs (0.5 - 5.4 kg) per monitor

#### FINISHES

FLAT WHITE | color code: 248

SILVER | color code: 124

VISTA BLACK | color code: 104



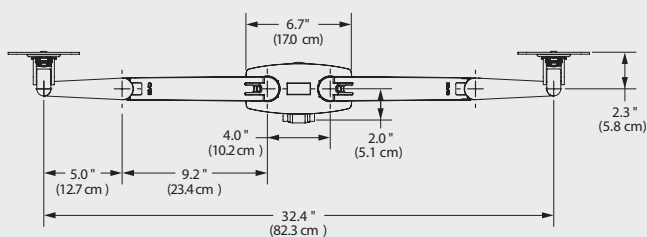
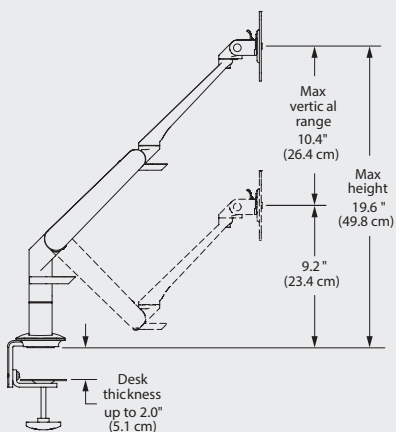
Marketed by

**SMART***desks*®

[www.smartdesks.com](http://www.smartdesks.com)

800 770 7042

## CAPABILITIES



### MOUNTING OPTIONS

