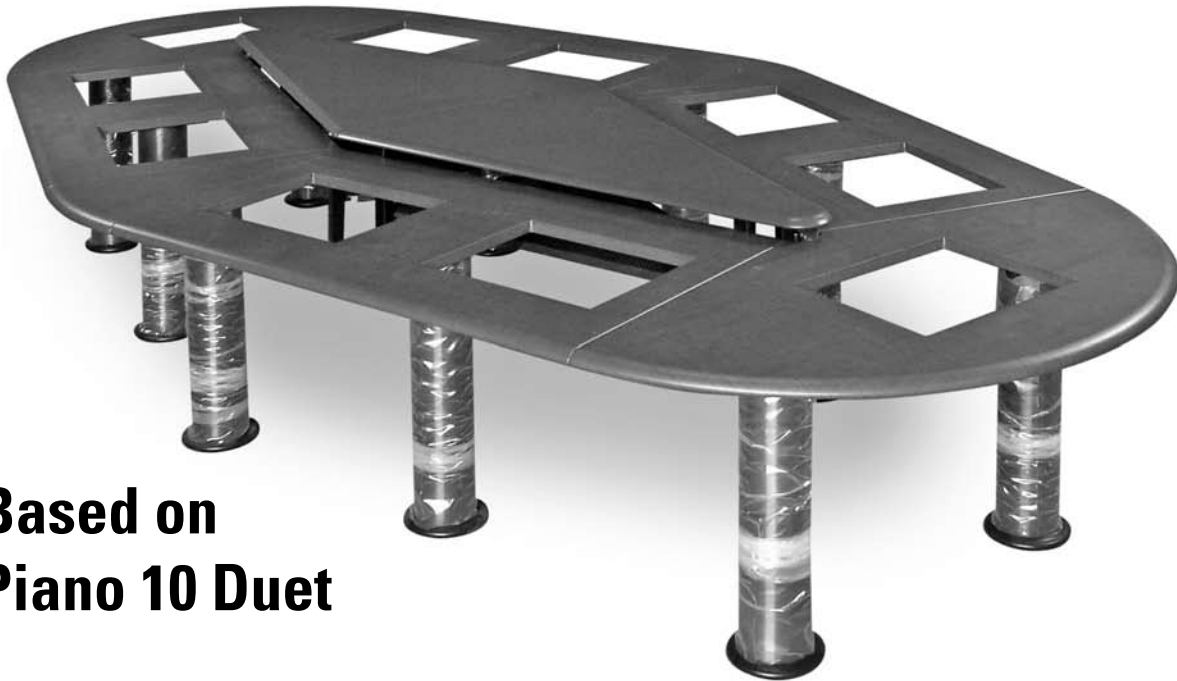


# Piano Duet Assembly Instructions



## Based on Piano 10 Duet

### Duet Series Piano Assembly Approach

These instructions are illustrated for a Piano 10 Duet Computer Conference Table. Piano Duet is available in other configurations, but the same principles apply. Observe that there are curved end sections, straight sections, and side transition sections, plus hinged lids and Doric column legs. If you are assembling a different model, you might have...

- more straight sections, or
- the straight sections might have 3 flipIT® stations instead of 2, or
- the side transition sections might be a slightly different shape, or
- the side transition sections might be expanded to include a flipIT® station, or
- there may be 4 lids instead of 2.

Given these variations, use these instructions as a guide for approach.

These instructions are based on a specific customer's requirements. Because each Piano Computer Conference Table is made to order, there may be differences in your hardware and part geometries.

### 2 People Required

Subassemblies need to be carefully lifted into position and a second set of hands is needed to stabilize assembly.

### Protect the table surfaces.

Assemble in an area protected by carpet, or lay down packing blankets to prevent scratching table top surfaces.

### Assemble the Piano Table First.

Install flipIT® FIH or FIK stations AFTER Piano is assembled. The weight of the flipIT® mechanics works against assembling the Piano safely. Consult flipIT® Installation Instructions for installing flipIT® Stations, but ignore the instruction to install flipIT® before desk assembly. This assumes a conventional desk, not the Piano.

### Plan Ahead

Know where the table will be positioned in the room. The table is assembled in sections that are small enough to fit in most elevators, hallways and doorways. Once fully assembled, the table should not be moved. The table should be assembled in its final position. Assembled sections may be lifted and moved together carefully. Have one person per section lift and move assembled table sections. Connecting brackets should be installed loosely until fully assembled, then tightened from one end to the other, leveling & fine tuning seams for each section.

## Tools, Bolts and Screws

Use a power driver with 5/8" hex head driver and a Phillips No. 2 screwdriver.

The 5/8" Hex/Phillips Head bolts are used to install brackets and legs.

The Phillips Head wood screws are used to install the lid struts.

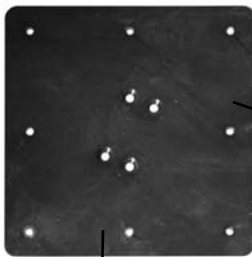


## Key to Parts

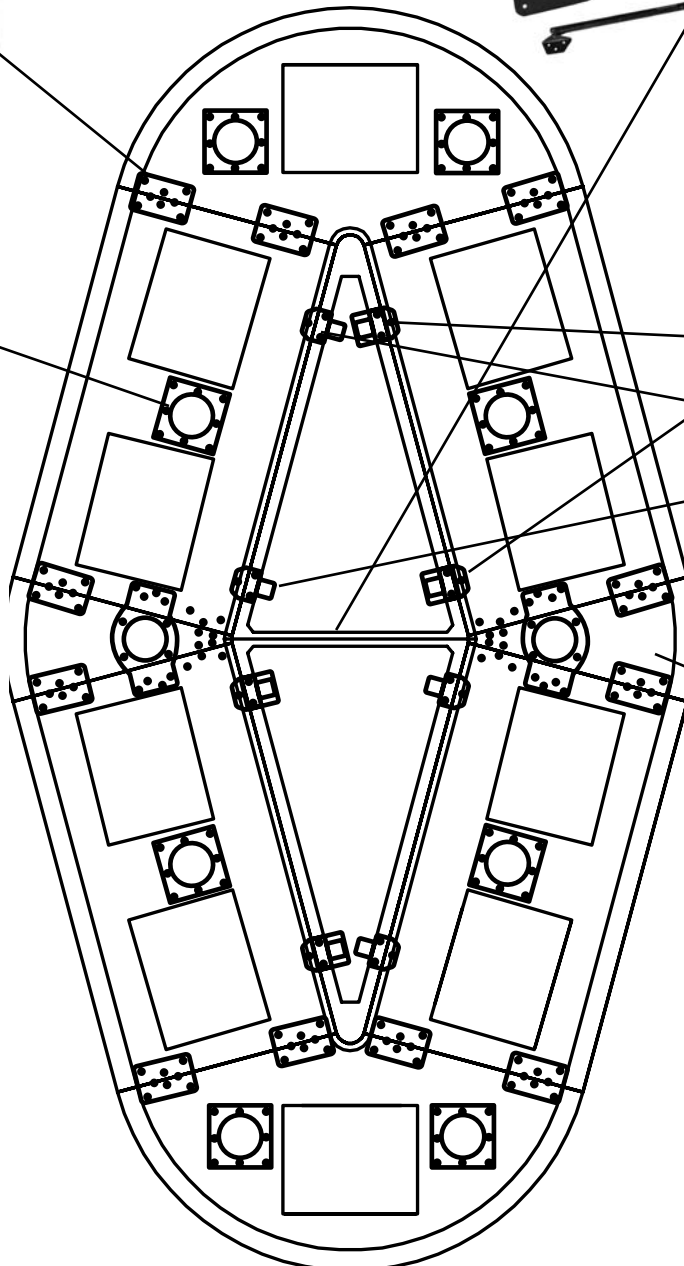
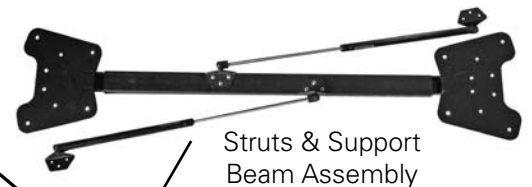
Connector Plates



Leg Plates  
(Installed on Legs)



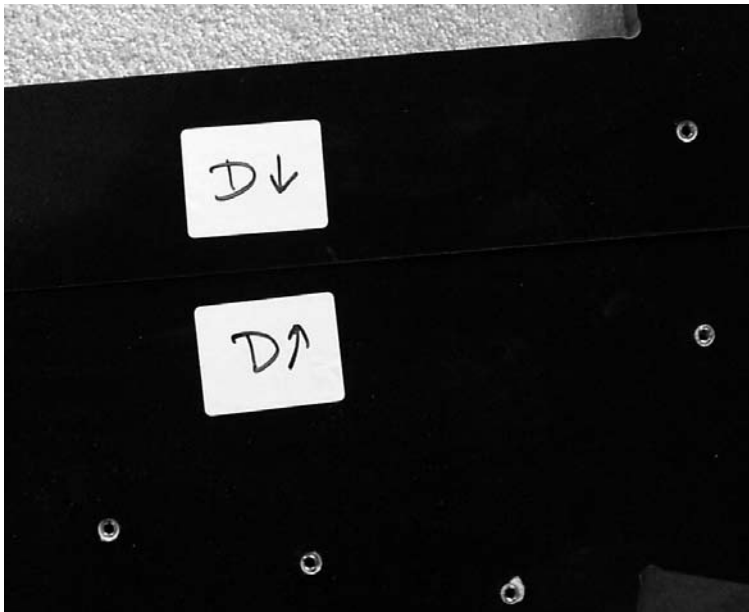
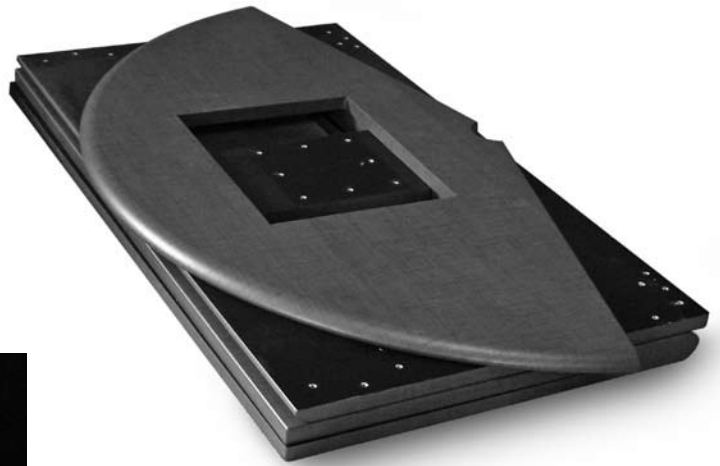
Doric Column Legs  
(Wire Management Holes  
are Special)



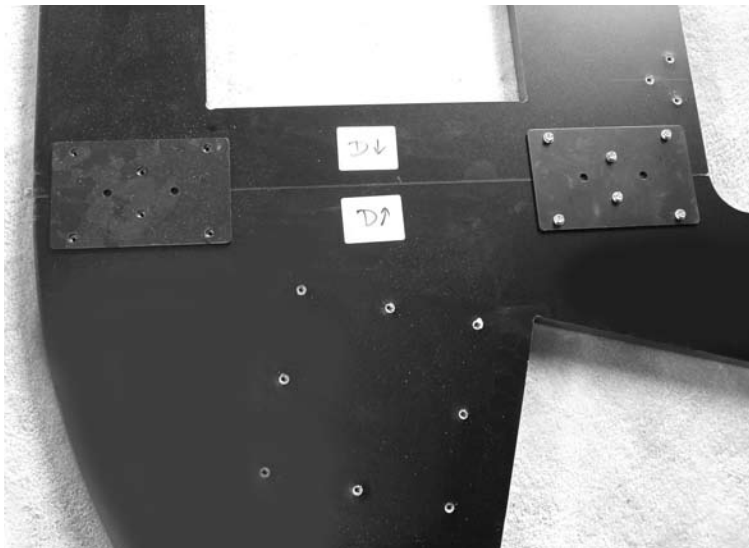
Wire Management Legs  
Installed with Transition  
Triangle Sections

## Approach to Assembly

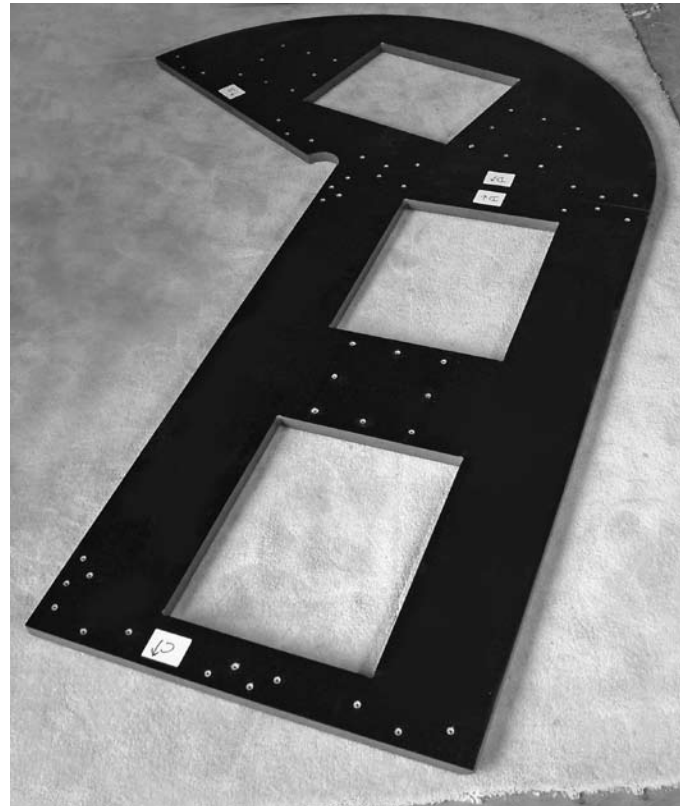
The diagram on the facing page shows how all of the top sections, leg plates, transition plates, connector plates, lid brackets, and the strut support beam assembly ultimately fit together. It is not possible to assemble the table completely and flip it over. Assembly must be accomplished in sections.



When you unpack your table section on a soft, carpeted or blanketed section of floor, you will notice labels with letters and arrows. These were applied at the factory when the connector plates were fitted. These letters do not indicate the order of assembly. They show which seams are formed when the sections are put together as they were in the factory. Edge A meets edge A. Edge B meets edge B. Edge D meets Edge D.



Locate an end section and a straight section that match up. Use a pair of connector plates and bolt the sections together using 6 hex bolts for each plate. Do not install the plates torqued down all the way. The plates will be snugged up when all top sections are completely assembled and the table is in its final position.



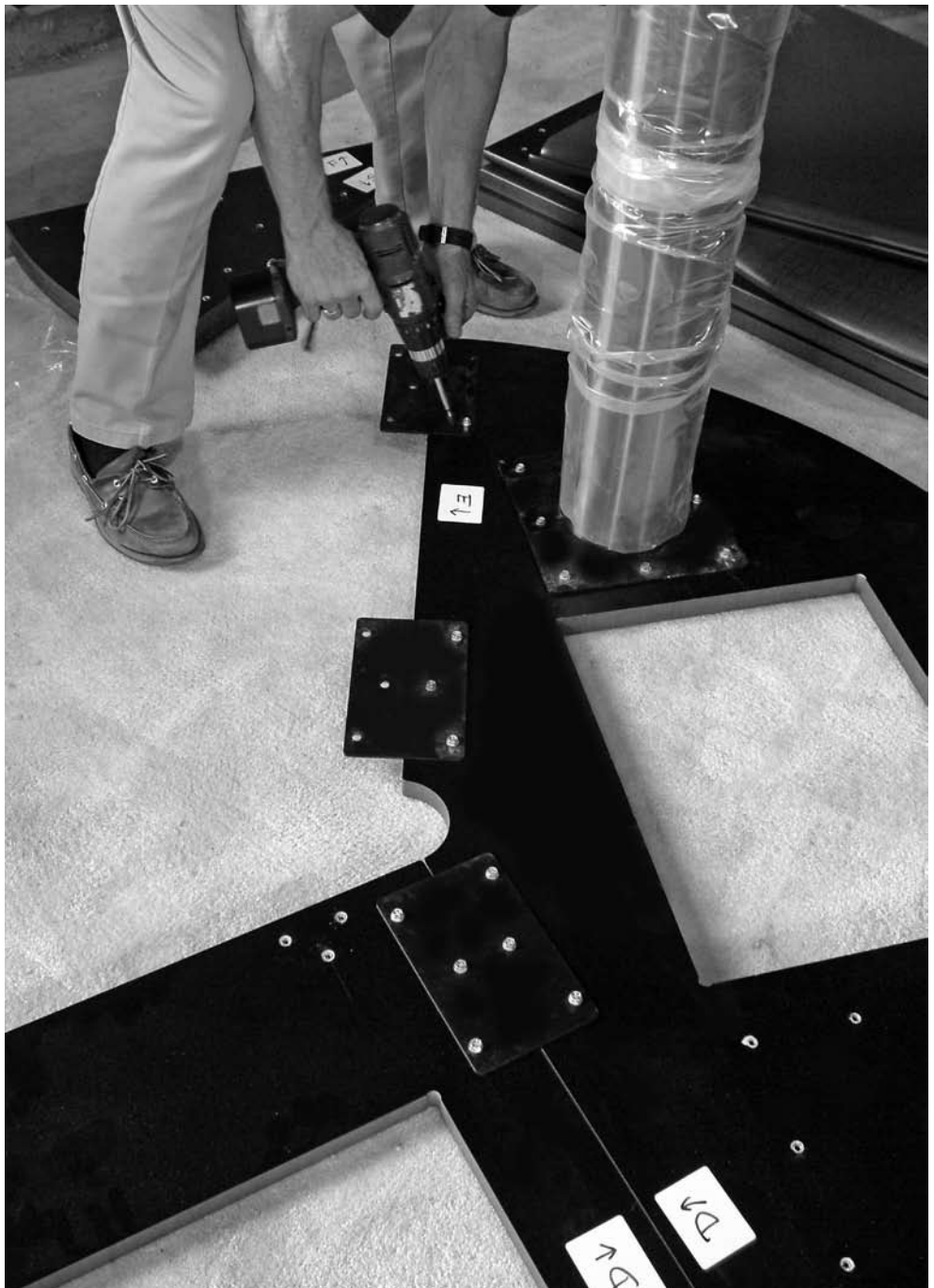
## Bolt Legs and Connector Plates

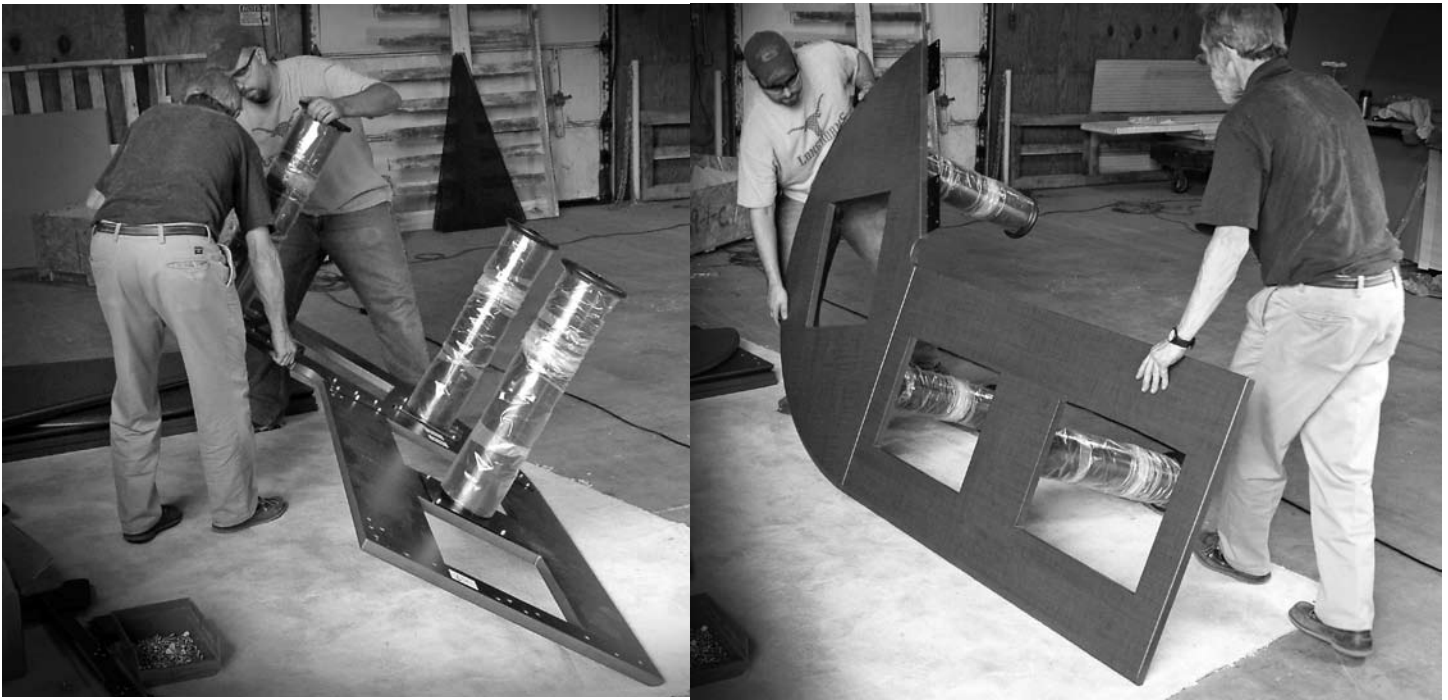
You are making a tripod to which the rest of the table will be assembled, section by section.

The Doric column legs that install at these locations do not have wire management holes. The square leg plate is installed on these legs. Use 6 hex head bolts to install each leg.

You may fully torque the leg bolts, but do not fully torque the connector plates.

The connector plates being installed are ready to accept the next section of table. The two sections being connected will be turned over on its feet, before the next section is connected.





## Carefully Turn the Table Over

This 2-section tripod can now be moved to its position in the room. Be careful to not put stress on the connector plates in this process. Lift and support the seam.

The next step will be to repeat this assembly for the other end.

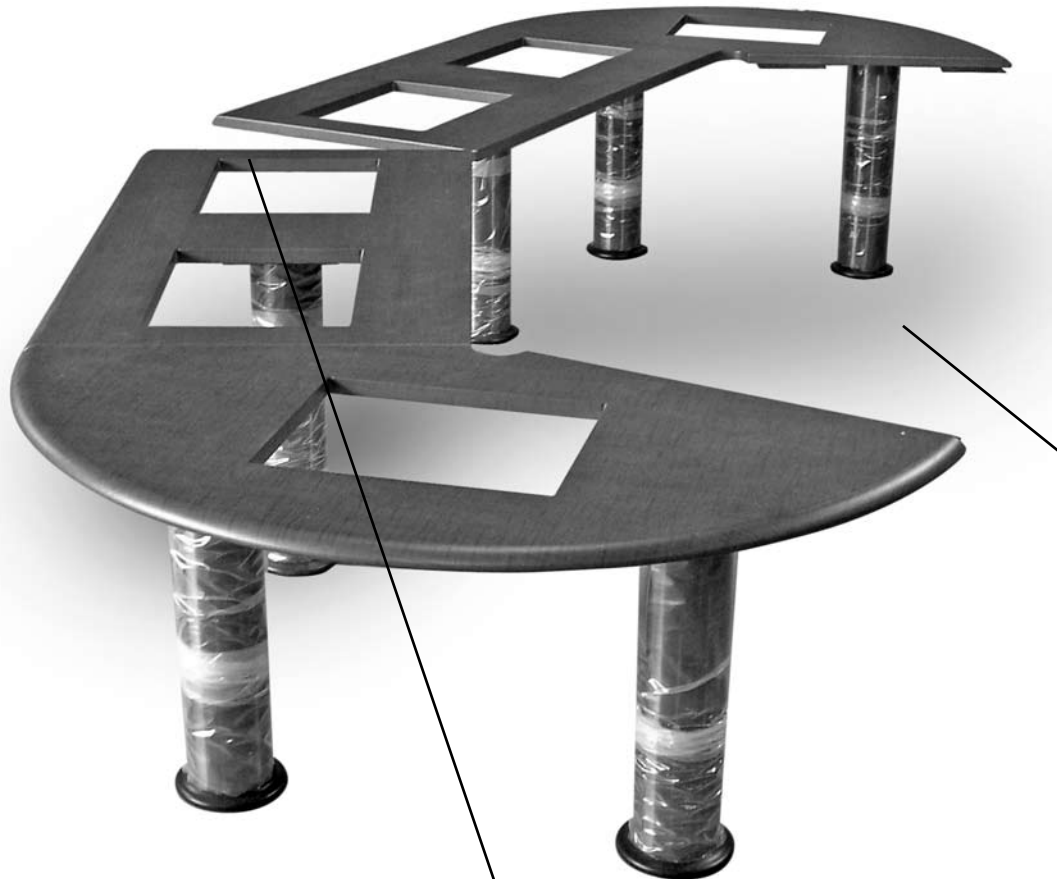




## Fine Tune the Location of the Table

With the ends able to stand by themselves, adjust the location of the table to its exact final location.

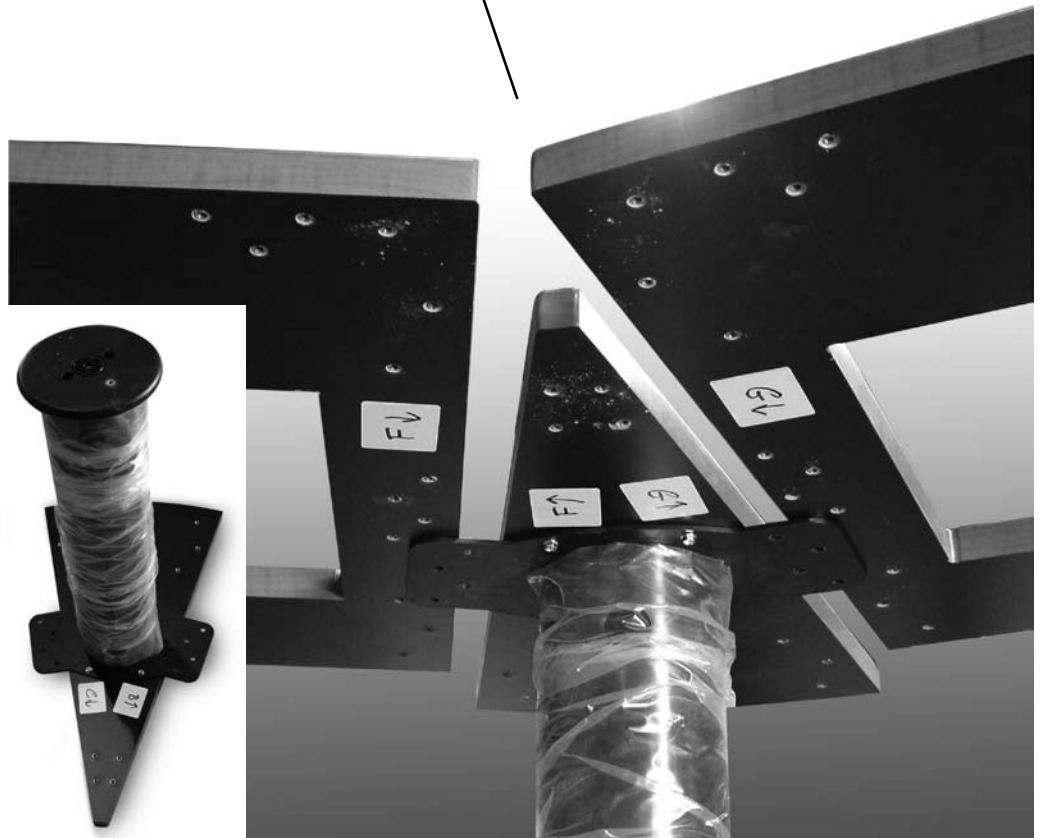
Use 2 people to move each group. If you are installing a larger table, install the straight sections on one side of each tripod and find help to support each group with one person assigned to each table section. This is your last chance to move this table.



## Assemble and Install a Transition

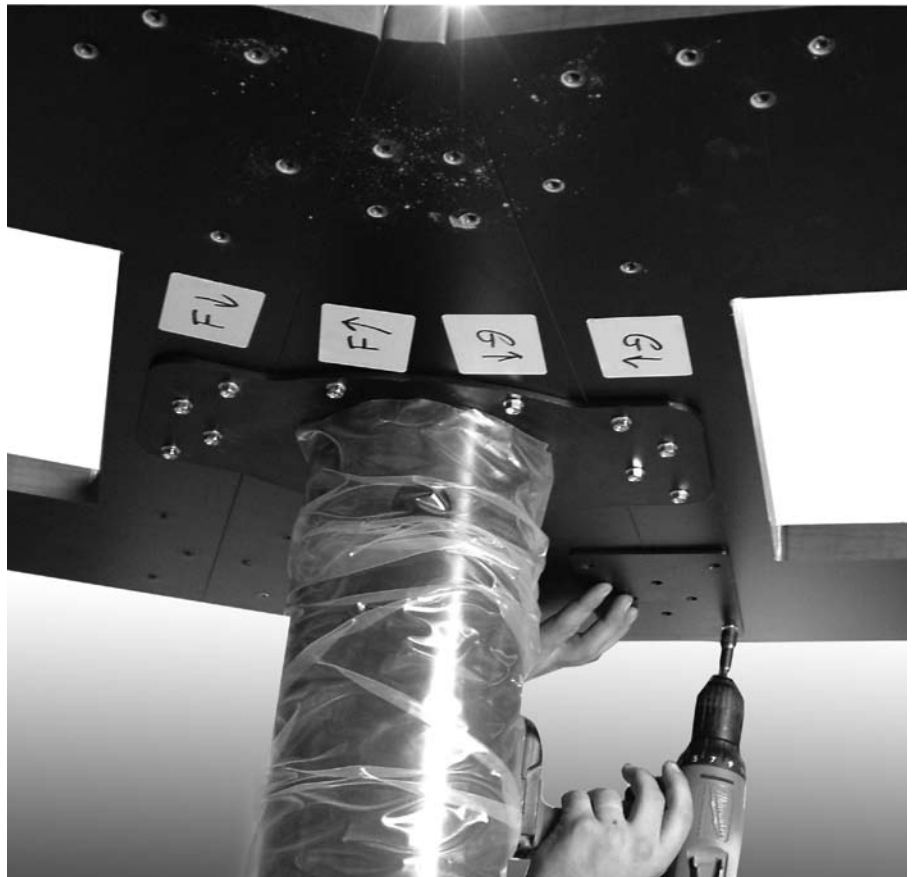
Check the labels to see which edges the transition mates with. Bolt the leg to the triangular transition with full torque.

Move the section into position and loosely install bolts into the leg connector plate with 4 bolts per side.



## Complete the Transition Installation

Use 2 Connector Plates to finish the installation of the transition section. Each connector plate uses 6 hex head bolts. Install these plates loosely so seams can be adjusted later.



## Install Straight Sections and Transition Section in the Open Side

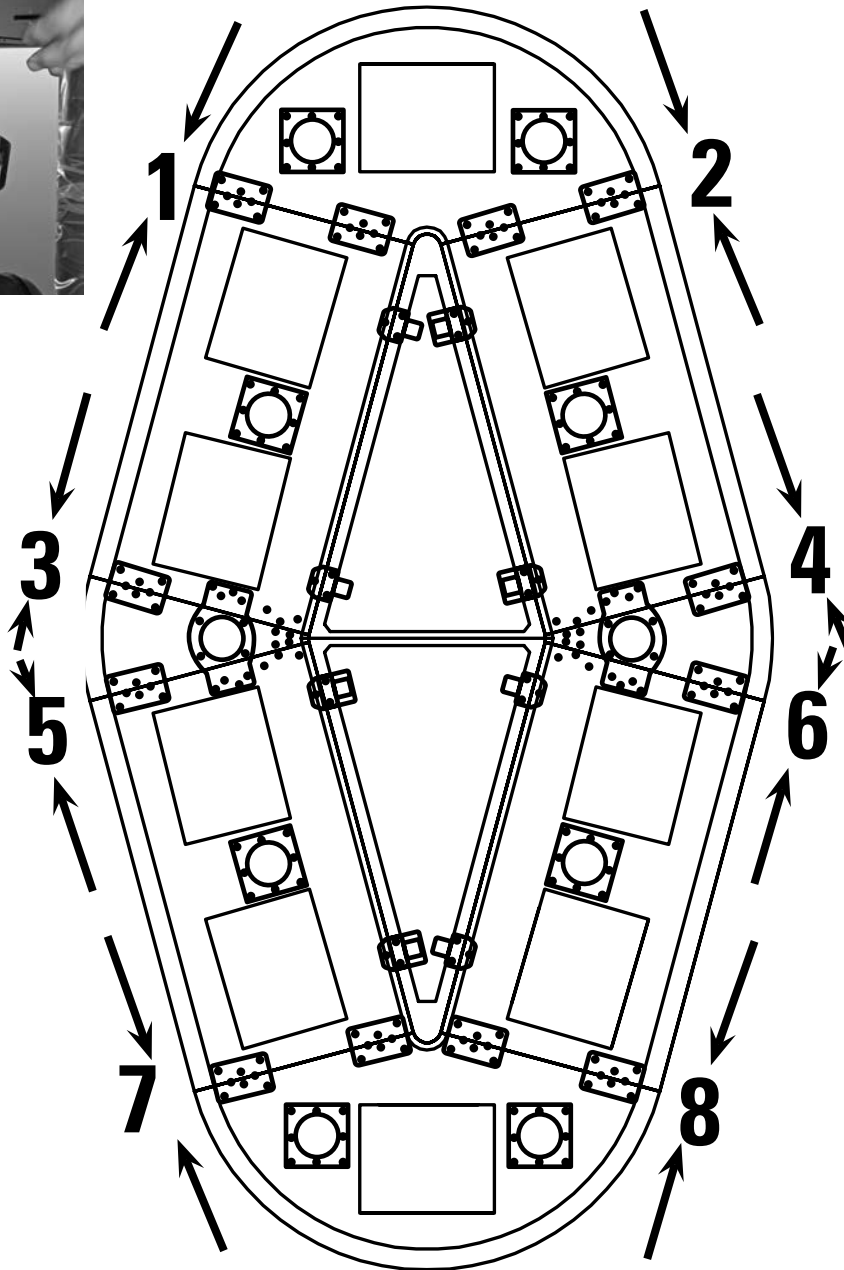
Check your labels to see which seams mate up with the same letters. Connect the straight sections to the ends first. Install the connector plates loosely.

Complete the table by installing the transition between the two straight sections.



## Align each seam and tighten connector plates

Start at one end of the table. With one person standing and one person under the table with a power hex driver, team up to accomplish this. One person holds the seam together in perfect alignment, while the other torques the connector plates.



If you find that some joints are buckling because the floor has a high or low spot, adjust the levelers found at the center of each leg. This will mean detaching the section to gain access to the leveler. Solve the problem at both ends of the section before resecuring the connector plates.

**When you are finished with this step, do not attempt to move the table.** If you need to move the table, detach the end sections from the rest of the table, move those sections, then reattach each section in the order illustrated. Do not put stress on the connector plates, or the bolts could tear out and ruin the table.



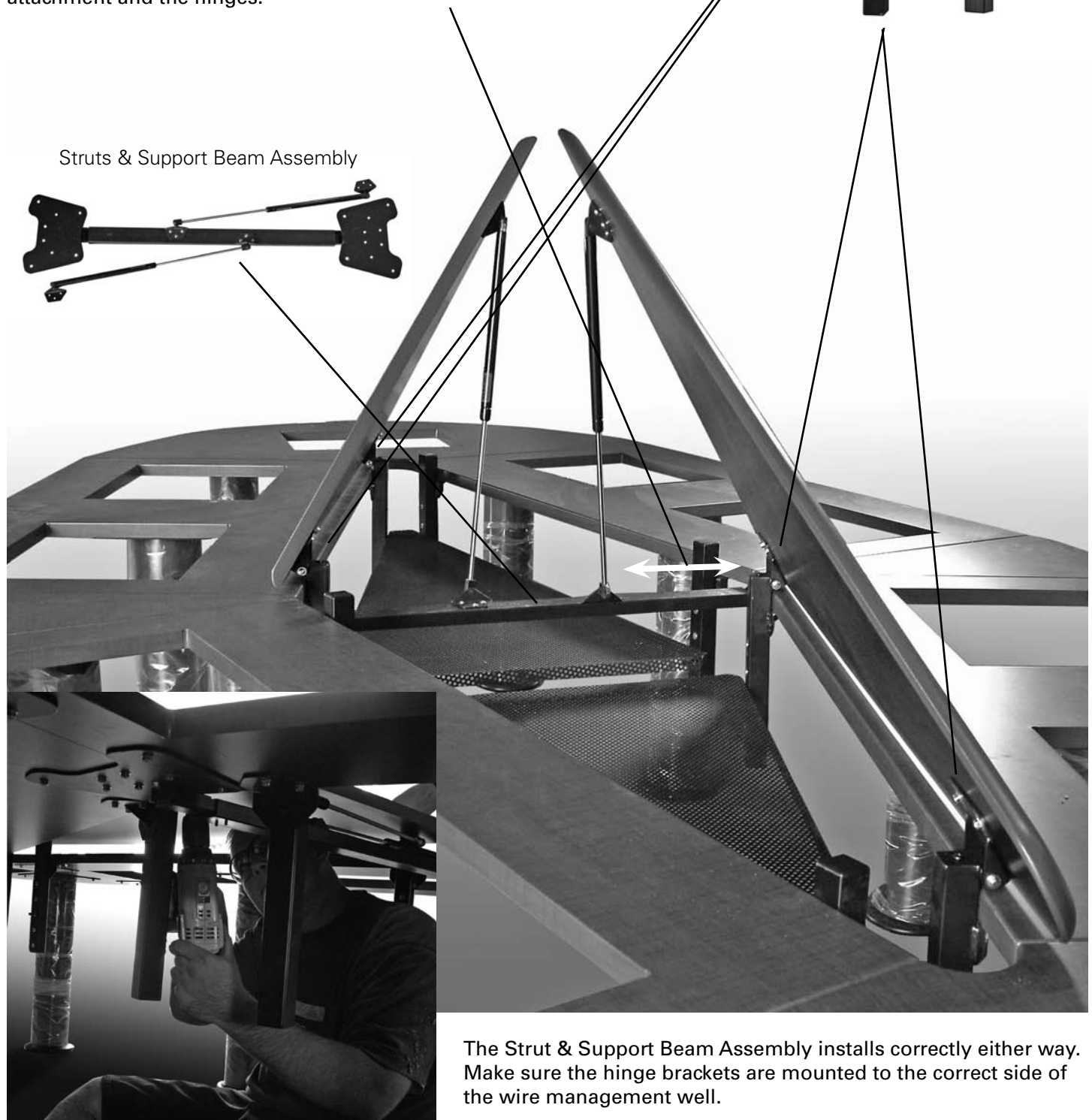
## Installing the lids, struts and pans

Lid/Pan Brackets  
Hinged Type & Rest Type

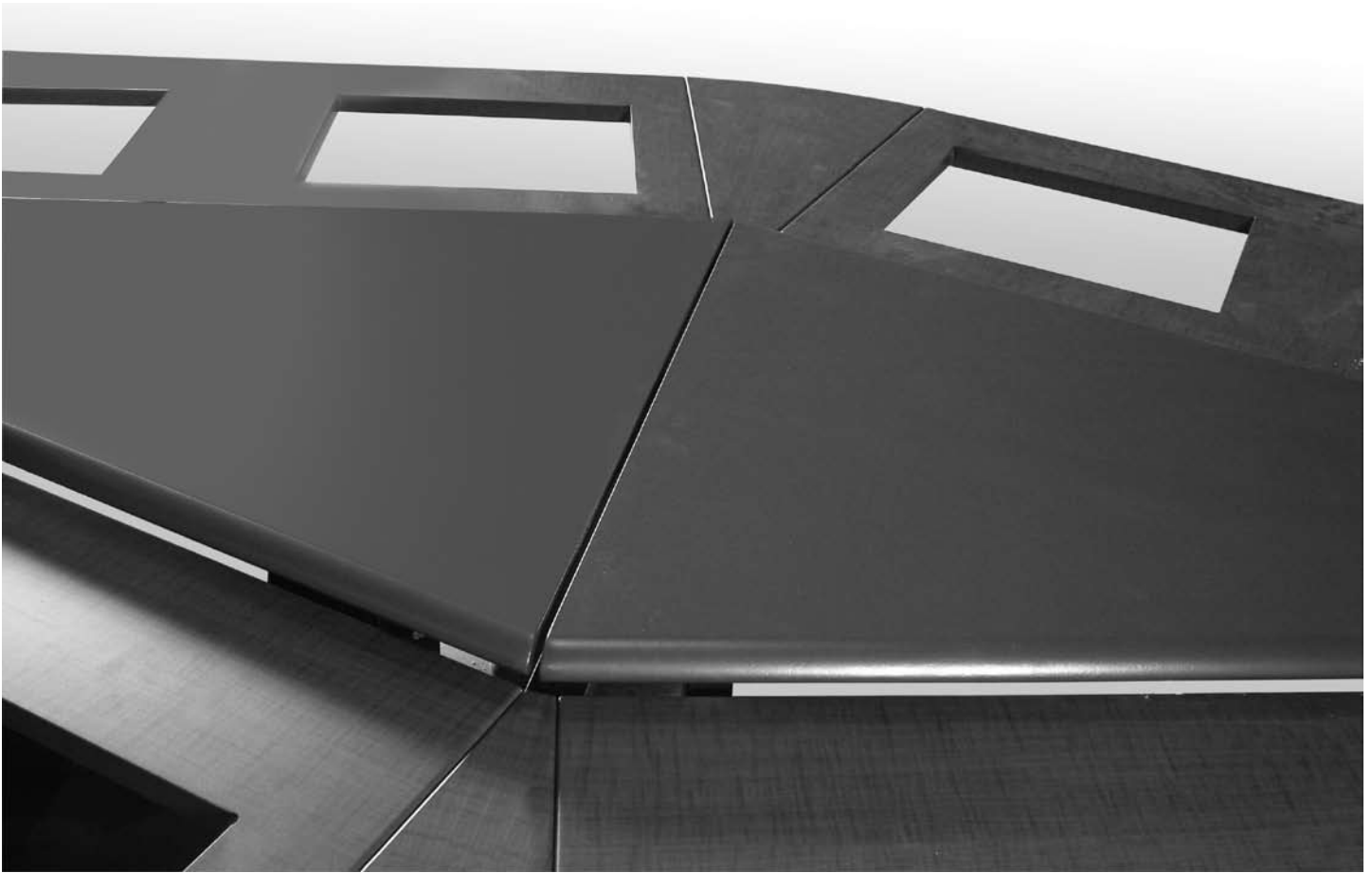
Use this picture as a reference to observe the locations of brackets, supports and struts.

From the underside of the table, install the Lid/Pan Brackets using hex head bolts in the locations provided. The bolts should be fully torqued. Note that the lids operate from opposing sides.

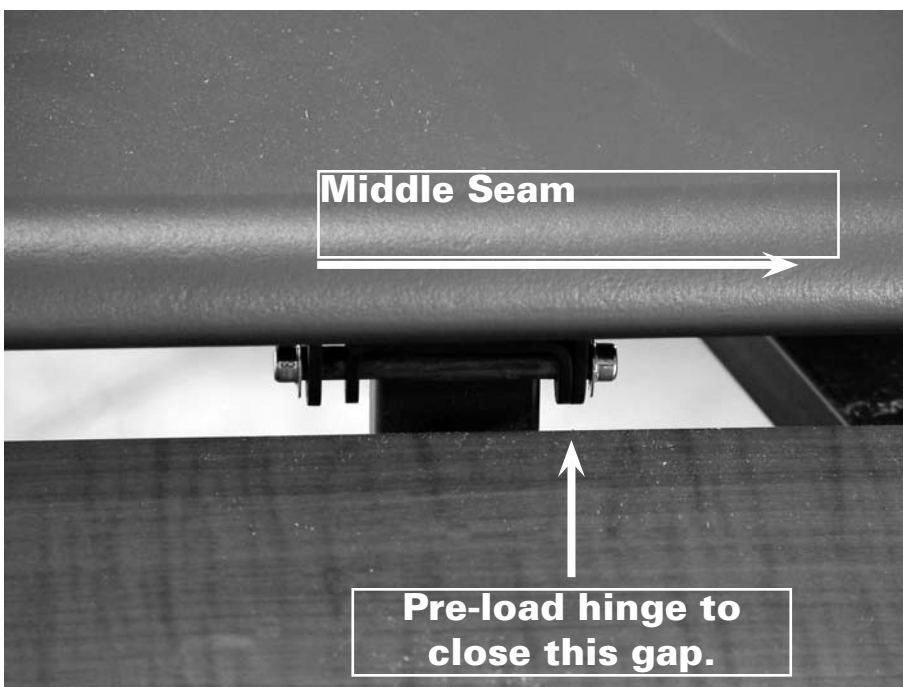
Next, install the Struts and Support Beam Assembly using 20 hex head bolts, fully torqued. Note the closer relationship of the strut attachment and the hinges.



**Place lids on hinges and bolt in place.**



Observe the alignment of the middle seam and the gap between the lid and the inside of the table. The gap between the two lids should be about 1/4".



The hinges have side-to-side play. In the process of setting the lid into place, position the play in the hinge away from the middle seam. This may change when in actual use.

Bolt the hinges to the lid. Have someone hold the lid as the bolts are fully torqued.

## Attach Struts to Lids

Use 3 Phillips head wood screws to attach the struts to the lids in the pilot holes provided.



## Set Wire Management Pans

Perforated metal wire management pans simply rest on the pins of the hinge/pan brackets. Pins may be repositioned to adjust pan height.





**[www.smartdesks.com](http://www.smartdesks.com)**  
**800 770 7042**

PO Box 391  
Hibernia, NJ 07842-0391