

# ENCLAVE PANELS

SMARTdesks®

## FRAMELESS DESK DIVIDERS

Fabric | Aluminum Edge  
Frosted Acrylic

SMARTdesks frameless desk dividers offer

- Flexibility
- Privacy
- Acoustic isolation
- An easy, economical way to convert free-standing tables into custom cubicals, study carrels or call center stations.



# ENCLAVE PANELS

SMARTdesks®

## FRAMELESS DESK DIVIDERS

Fabric | Aluminum Edge



Enclave Privacy Panel, rectangular fabric panel with rounded corners, edge-banded in silver, core is 1" thick acoustic absorbing material; order mounting hardware separately (required); temporary and permanent mounting possible (PPFAD-U series mounting hardware). Specify fabric color.

ITEM NUMBER	DESCRIPTION
PPFAD-EB-1718-F-SV	Enclave Edge Banded Tbl Top Panel, fabric, 17"w x 18"h
PPFAD-EB-1722-F-SV	Enclave Edge Banded Tbl Top Panel, fabric, 17"w x 22"h
PPFAD-EB-2318-F-SV	Enclave Edge Banded Tbl Top Panel, fabric, 23"w x 18"h
PPFAD-EB-2322-F-SV	Enclave Edge Banded Tbl Top Panel, fabric, 23"w x 22"h
PPFAD-EB-2918-F-SV	Enclave Edge Banded Tbl Top Panel, fabric, 29"w x 18"h
PPFAD-EB-2922-F-SV	Enclave Edge Banded Tbl Top Panel, fabric, 29"w x 22"h
PPFAD-EB-3618-F-SV	Enclave Edge Banded Tbl Top Panel, fabric, 36"w x 18"h
PPFAD-EB-3622-F-SV	Enclave Edge Banded Tbl Top Panel, fabric, 36"w x 22"h
PPFAD-EB-4818-F-SV	Enclave Edge Banded Tbl Top Panel, fabric, 48"w x 18"h
PPFAD-EB-4822-F-SV	Enclave Edge Banded Tbl Top Panel, fabric, 48"w x 22"h
PPFAD-EB-6018-F-SV	Enclave Edge Banded Tbl Top Panel, fabric, 60"w x 18"h
PPFAD-EB-6022-F-SV	Enclave Edge Banded Tbl Top Panel, fabric, 60"w x 22"h
PPFAD-EB-7218-F-SV	Enclave Edge Banded Tbl Top Panel, fabric, 72"w x 18"h
PPFAD-EB-7222-F-SV	Enclave Edge Banded Tbl Top Panel, fabric, 72"w x 22"h

Multiple sizes and mounting options all for easy attachment to any style table, and easily integrated with SMARTdesks furniture.

- Core material: Tackable Fabric
- Metal trim style is framed with anodized aluminum for an aesthetic and durable finish
- Clamps are heavy gauge steel with a powder coated finish
- Fabric cores are constructed using a solid, sound absorbing acoustic panel material to reduce noise levels and provide call center sound isolation

# ENCLAVE PANELS

SMARTdesks®

## FRAMELESS DESK DIVIDERS

Frosted Acrylic



Enclave Privacy Panel, rectangular frosted acrylic panel with smooth edges, order mounting hardware separately (required); temporary and permanent mounting possible (PPFAD-V series mounting hardware).

ITEM NUMBER	DESCRIPTION
PPFAD-FRO-1718-FRO	Enclave Frosted Acrylic Table Top Panel, 17" w x 18" h
PPFAD-FRO-1722-FRO	Enclave Frosted Acrylic Table Top Panel, 17" w x 22" h
PPFAD-FRO-2318-FRO	Enclave Frosted Acrylic Table Top Panel, 23" w x 18" h
PPFAD-FRO-2322-FRO	Enclave Frosted Acrylic Table Top Panel, 23" w x 22" h
PPFAD-FRO-2918-FRO	Enclave Frosted Acrylic Table Top Panel, 29" w x 18" h
PPFAD-FRO-2922-FRO	Enclave Frosted Acrylic Table Top Panel, 29" w x 22" h
PPFAD-FRO-3618-FRO	Enclave Frosted Acrylic Table Top Panel, 36" w x 18" h
PPFAD-FRO-3622-FRO	Enclave Frosted Acrylic Table Top Panel, 36" w x 22" h
PPFAD-FRO-4818-FRO	Enclave Frosted Acrylic Table Top Panel, 48" w x 18" h
PPFAD-FRO-4822-FRO	Enclave Frosted Acrylic Table Top Panel, 48" w x 22" h
PPFAD-FRO-6018-FRO	Enclave Frosted Acrylic Table Top Panel, 60" w x 18" h
PPFAD-FRO-6022-FRO	Enclave Frosted Acrylic Table Top Panel, 60" w x 22" h
PPFAD-FRO-7218-FRO	Enclave Frosted Acrylic Table Top Panel, 72" w x 18" h
PPFAD-FRO-7222-FRO	Enclave Frosted Acrylic Table Top Panel, 72" w x 22" h

Multiple sizes and mounting options all for easy attachment to any style table, and easily integrated with SMARTdesks furniture.

- Core material: Frosted Acrylic
- Clamps are heavy gauge steel with a powder coated finish

# ENCLAVE PANELS

## MOUNTING OPTIONS

SMARTdesks®



### Free Standing Foot

- Fast and easy installation and relocation
- Stands freely on top of work surface
- Temporary mounting
- No screwing or drilling into work surface required
- Foot position is adjustable
- A center pad will be needed for units 60" and wider.



### PPFAD-UFS2P

**Set of 2 + center pad** (stands freely on top of work surface), use with thicker panels 60" wide and wider.



### PPFAD-VFS2P

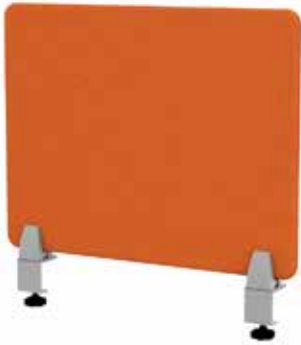
**Set of 2 + center pad** (stands freely on top of work surface), use with thicker panels 60" wide and wider.

### PPFAD-UFS2

**Set of 2.** Use with thicker panels under 60" wide.

### PPFAD-VFS2

**Set of 2.** Use with thicker panels under 60" wide.



### Edge Clamp - Knob

- Fast and easy installation and relocation
- Mount along edge of work surface
- Clamp fits 3/4" to 2" thick tops
- Temporary mounting
- No screwing or drilling into work surface required
- Clamp position is adjustable
- Specify 2 or 3 clamps depending on the size of the desk divider



### PPFAD-UCEK3

Set of 3 (clamps panel to edge of table), suitable for table tops 3/4" to 2" thick, use with thicker panels 60" wide and larger



### PPFAD-VCEK3

Set of 3 (clamps panel to edge of table), suitable for table tops 3/4" to 2" thick, use with thicker panels 60" wide and larger

### PPFAD-UCEK2

Set of 2. Use with thicker panels under 60" wide.

### PPFAD-VCEK2

Set of 2. Use with thicker panels under 60" wide.



### Edge Clamp - Lever

- Fast and easy installation and relocation
- Mount along edge of work surface
- Clamp fits 5/8" to 2" thick tops
- Temporary mounting
- No screwing or drilling into work surface required
- Clamp position is adjustable
- Specify 2 or 3 clamps depending on the size of the desk divider



### PPFAD-UCEL3

**Set of 3** (clamps panel to edge of table), suitable for table tops 5/8" to 2" thick, use with thicker panels 60" wide and larger



### PPFAD-VCEL3

**Set of 3** (clamps panel to edge of table), suitable for table tops 5/8" to 2" thick, use with thicker panels 60" wide and larger

### PPFAD-UCEK2

**Set of 2.** Use with thicker panels under 60" wide.

### PPFAD-VCEK2

**Set of 2.** Use with thicker panels under 60" wide.



# ENCLAVE PANELS

## MOUNTING OPTIONS

SMARTdesks®



### Top Mount - Screw Type Use for permanent mounting

- Locate anywhere on desk
- Works on tops of any thickness
- Top plate positions are adjustable
- Specify 2 or 3 clamps depending on the size of the desk divider



#### PPFAD-UTM3

**Set of 3** (permanent mounting anywhere on top surface), use with thicker panels 60" wide and larger



#### PPFAD-VTM3

**Set of 3** (permanent mounting anywhere on top surface), use with thicker panels 60" wide and larger

#### PPFAD-UTM2

**Set of 2.** Use with thicker panels under 60" wide.

#### PPFAD-VTM2

**Set of 2.** Use with thicker panels under 60" wide.



### Middle Clamp and Foot

- Fast, easy installation and relocation
- Mount perpendicular to edge of work surface
- Clamp fits 5/8" to 2" top thickness
- Temporary or permanent mounting
- No screwing or drilling into work surface
- Only one clamp required to secure a desk divider



#### PPFAD-UCMS

##### 1 Clamp, 1 Foot

(clamps panel perpendicular to table edge), suitable for table tops 5/8" to 2" thick, use with thicker panels up to 29" w.



#### PPFAD-VCMS

##### 1 Clamp, 1 Foot

(clamps panel perpendicular to table edge), suitable for table tops 5/8" to 2" thick, use with thicker panels up to 29" w.



### Middle Clamp

- Fast, easy installation and relocation
- Mount perpendicular to edge of work surface
- Clamp fits 5/8" to 2" top thickness
- Temporary or permanent mounting
- No screwing or drilling into work surface
- Two clamps for use with larger dividers
- A center pad will be included on units 54" wide and wider



#### PPFAD-UCMD

**Set of 2** (clamps panel perpendicular to table edge), suitable for table tops 5/8" to 2" thick, use with thicker panels up to 48" w.



#### PPFAD-VCMD

**Set of 2** (clamps panel perpendicular to table edge), suitable for table tops 5/8" to 2" thick, use with thicker panels up to 48" w.

#### PPFAD-UCMDP

**Set of 2 + center pad** (clamps panel perpendicular to table edge), suitable for table tops 5/8" to 2" thick, use with thicker panels 60" w or wider.

#### PPFAD-VCMDP

**Set of 2 + center pad** (clamps panel perpendicular to table edge), suitable for table tops 5/8" to 2" thick, use with thicker panels 60" w or wider.



# ENCLAVE PANELS

## FABRICS & FINISHES

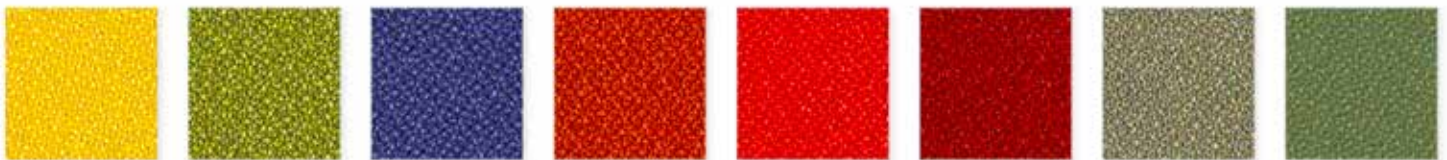
SMARTdesks®

### FABRICS - UNIVERSE LINE



Creme Brulee    Whitecap    Mica    Milkyway    Wheat    Seneca    Cosmic    Depth

### FABRICS - ORIGIN LINE



Eureka    Gaia    Euro    Mikan    Poppy    Annatto    Avalon    Eco



Sodalite    Caraway    Twine    Fez    Arundel    Stately    Sapphire    Indigo



Amethyst    Garnet    Malt    Manta    Steel    Iron    Basalt    Jet

### PANEL EDGE TRIM



SV  
Silver

[www.smartdesks.com](http://www.smartdesks.com) | 800 770 7042

SMARTdesks®